

ATEX+

CMPF DESIGN

Color | Material | Pattern | Finish

AJUSTEEL

Head Office

321, 4gongdan-ro, Gumi-si, Gyeongsangbuk-do, Korea

Design Office

Unit 605, Building B, XI Tower, 67, Seabitgongwon-ro, Gwangmyeong-si, Gyeonggi-do, Korea

Official Contact No.

+82-54-714-3000

www.ajusteel.co.kr

본 내용은 제품에 대한 정보를 제공하는 것이 목적이며, 본 카탈로그의 색상과 실제 제품에는 다소 차이가 발생할 수 있습니다.

Contents

Introduce

- 04 기업소개 Company Introduction
- 06 기술소개 Technology Process
- 07 제품소개 Product Introduction

Pattern

- 08 패턴 컬렉션 Pattern Collection
- 10 적용 제품 Applicable products
- 12 디자인 컨셉 Design Concept
- 14 패턴 갤러리 Pattern Gallery

정성과 노력으로
 품질을 완성하는
 철강소재 전문 기업,
아주스틸

아주스틸은 철강소재의 본질에 정성과 기술을
 더해 성장해온 철강소재 전문 기업입니다.

아주스틸은 철강의 본질 위에 혁신적인 기술과 창의적인 디자인을 더해,
 기존의 한계를 넘어서는 새로운 가치를 만들어가고 있습니다.
 우리의 제품은 기능을 넘어, 소재가 지닌 미래의 가능성을 현실로 구현합니다.

아주스틸은 고객이 제품을 통해 새로운 경험을 할 수 있도록 끊임없는 발전을 시도하며,
 산업과 일상 속에서 더 큰 가치를 만들어가기 위해
 기술과 감성을 아우르는 차별화된 솔루션을 제시합니다.

1995~2008
 제조기반 구축

- 1995 회사설립
- 2003 아주스틸 #1공장 준공 (Slitter 1기, Shear 1기)
- 2007 아주스틸 #2공장 준공 (Slitter 2기)
- 2008 CCL #1 준공

2011~2018
 선진국형 기업으로 성장

- 2011 중국법인 설립 (구. 홍콩 한아스틸 인수)
 미국(샌디에고) 판매법인 설립
 아주엠씨엠 설립 (구. 엠씨엠텍 인수)
 MCCL 공장 준공
- 2012 멕시코 티후아나 가공공장 준공
- 2015 CPL #1 준공

- 2018 아주엠씨엠 구미공장 준공
 CPL #2 준공
 CCL #2 준공
- 2019 아주멕시코 #2공장(가공제조) 준공

2020~
 대체 불가 기업으로 도약

- 2020 EGL 설비 인수 (구. 두원스틸 인수)
- 2021 유가증권시장 (KOSPI) 상장
 김천 CCL #3, HMP #1 준공
- 2022 CCL #4, HMP #2 준공
- 2023 아주멕시코 #3공장 준공 (SI압출) 준공
 아주스틸 구미 Atex Center 설립
 아주멕시코 #4공장 (오븐공장) 준공
 아주스틸 김천 CGCL 준공
- 2024 아주폴란드 칼라공장 준공
- 2025 동국제강 그룹 편입 (최대주주 동국씨엠)

Capacity
 연간 생산량

Total
 총 생산량 **74**
 Million | Tons

Color
 컬러 **34**
 Million | Tons

Plating
 도금 **40**
 Million | Tons

동국제강그룹
 철강부문 제품
 총 생산량 **888**
 Million | Tons

아주스틸	도금 (40만톤) 컬러 (34만톤)
동국씨엠	도금 (174만톤) 컬러 (85만톤)
동국제강	후판 (150만톤) 철근 (275만톤) 형강 (130만톤)

Business
 사업영역

건축 내/외장재
 내·외장재 | 방화문 | 엘리베이터 | 시스템 욕실

영상/생활가전
 LCD | TV | 세탁기 | 냉장고 | 오븐 | 프리미엄 빌트인 소재

전장/2차 전지/트레일러용 소재
 헤드램프 · EV인버터용 MCCL | 전기차 배터리 Cell Case
 트레일러 포밍, 압출재, 열연 가공 센터

고내식 강건재
 태양광구조물 | 스마트팜 | 건축 구조물 | 한전 구조물

DP Digital Print

초고속 롤투롤 방식의 고해상도 프린팅 기술

설비 사양 Specification

Width ~1407.9mm
Length No Limits
Resolution H/W 300dpi
S/W 1200dpi

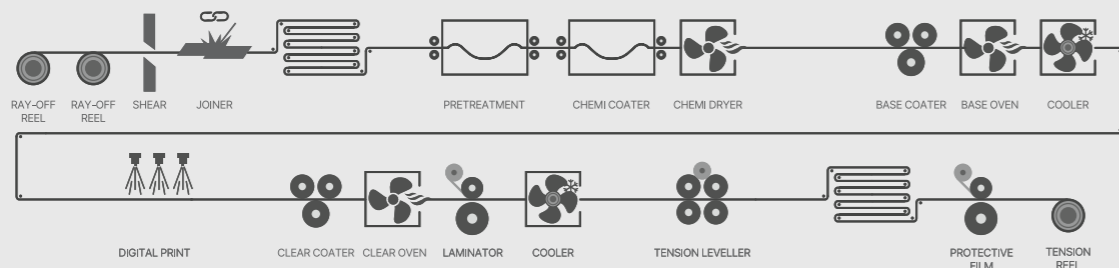
설비 보유 대수 Number of facility

2EA C1 DP Roll to Roll
C4 DP Roll to Roll

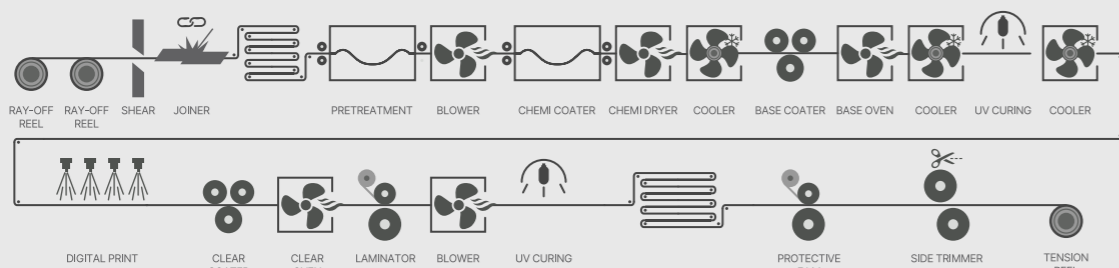


제품 공정도 Manufacturing Process

C1 DP



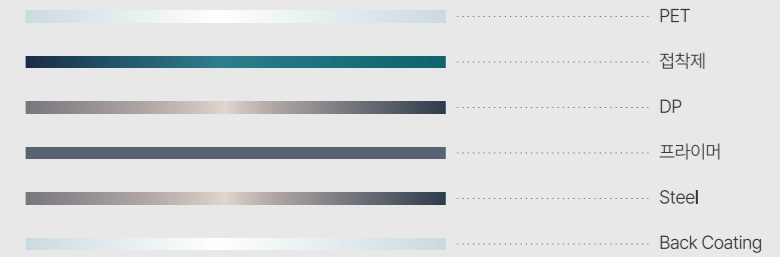
C4 DP



GLAS:TEEL

Digital Glass + Steel
유리의 선명함과 스틸의 가공성을 결합한 제품

제품 레이어 Product Layer



제품 특징 Features

- 품질 우수성** (Quality Excellence)
 - 4H 고경도 (4H High Hardness)
 - 내알칼리, 내식성, 내산성 등에 높은 신뢰성 달성 (Achieving high reliability for alkali resistance, corrosion resistance, and acid resistance)
 - 자유로운 가공 가능 (Free processing possible)
- UV 경화 처리** (UV Curing Treatment)
 - UV 경화 처리 기술을 통한 높은 광투과율로 글라스와 유사한 외관 구현 가능 (Achieving high light transmittance through UV curing technology, similar to glass appearance)
 - PET 필름을 활용하여 고급스러운 외관 연출 (Using PET film to create a sophisticated appearance)
- 준불연재 제품** (Semi-flame retardant product)
 - 0.1mm 이하의 표면처리를 통한 준불연재 인정 제품 (Product approved as semi-flame retardant through surface treatment of 0.1mm or less)

제품 사양 Specification

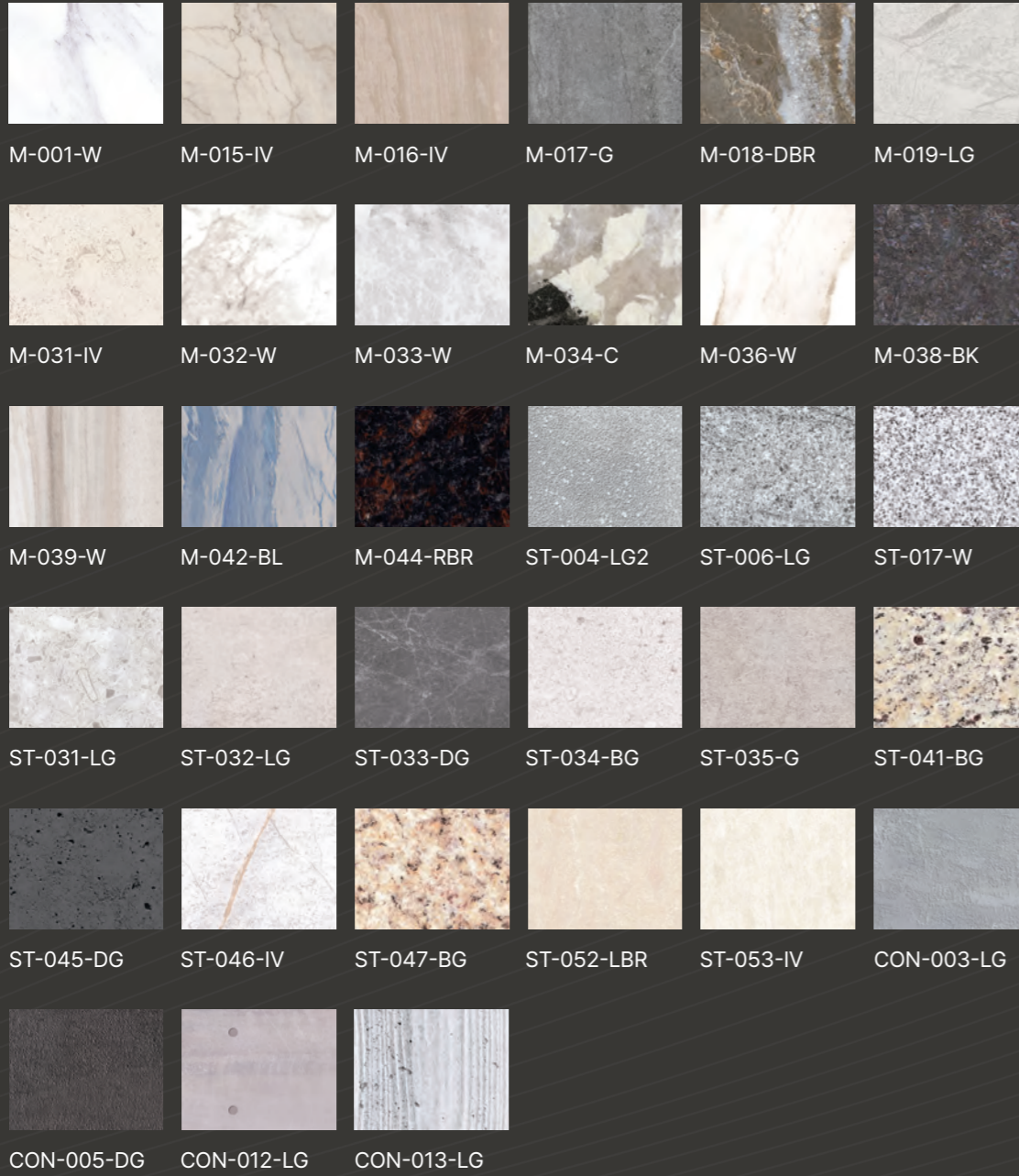
항목	시험 조건	시험 규격	시험 결과	
기계적 물성	내열성	120°C 에서 8hrs 방치	이상없을것	OK
	항온항습성	40°C, RH95%인 환경에 24hrs 방치	이상없을것	OK
	내비등수	98±2°C 30min 침지 * 상온 30min 방치	이상없을것	OK
	내충격성	DUPON식 500g, ø1/2" 500mm	이상없을것	OK
	에릭슨	압출속도 1mm/s	3mm 이상	OK
	밀착성	1mm Cross-cut 테이프 박리, 100/100	이상없을것	OK
	연필경도	Mitsubishi uni pencil (750g)	3H 이상	OK
화학적 물성	내한성	-10°C에서 10hrs 방치	이상없을것	OK
	내산성	5% CH ₃ COOH(초산) 72hrs 방치	이상없을것	OK
	내알칼리성	5% Na ₂ CO ₃ (탄산나트륨) 72hrs 침지	이상없을것	OK
	내합성세제성	5% 합성세제 락스, 240hrs 침지	이상없을것	OK
	염수분무	5% NaCl, X-Cutting 시편 240hrs 방치	이상없을것	OK
	내오염성	적색 lipstick * 24hrs	이상없을것	OK

Pattern collection

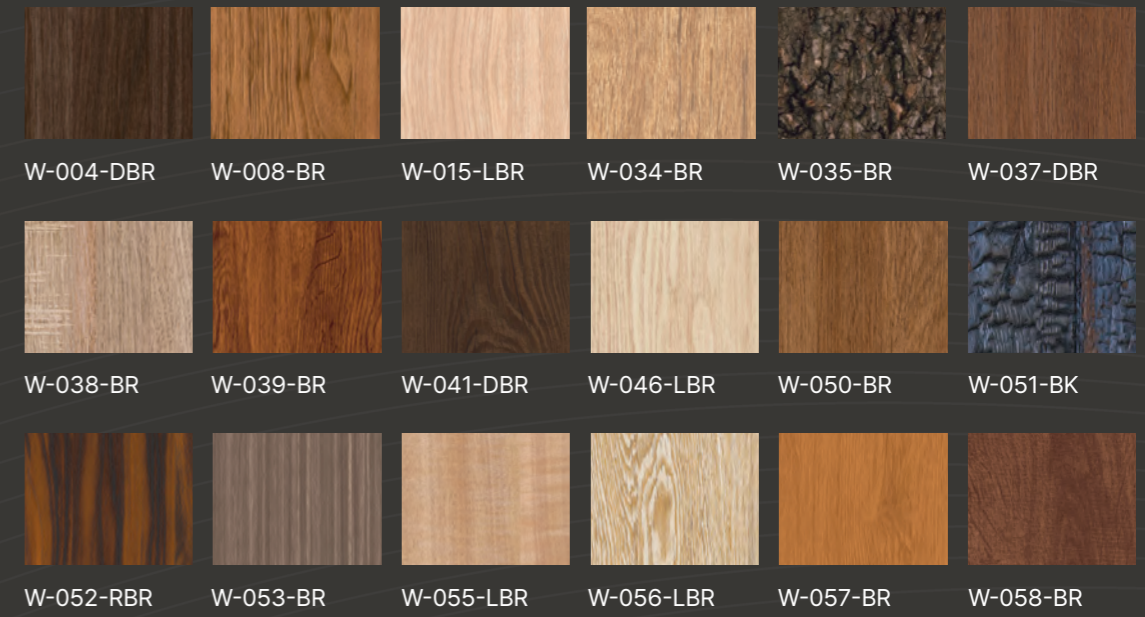
패턴 컬렉션

Digital print

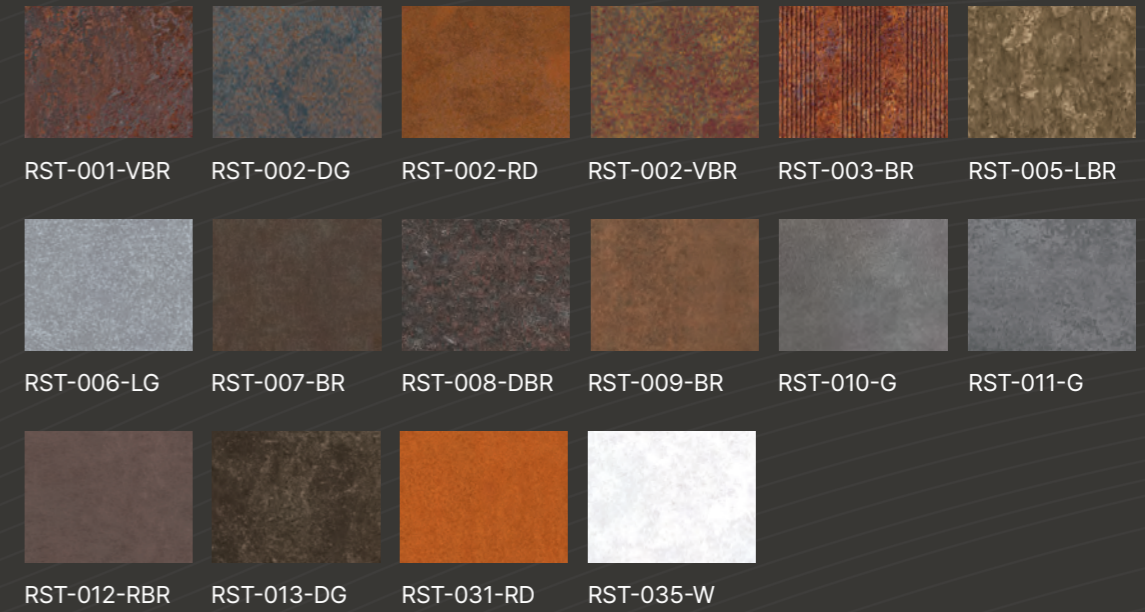
STONE



WOOD



CORTEN



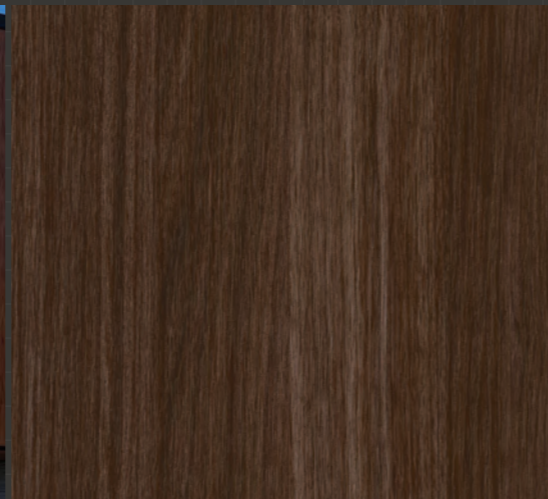
GEO METRY & FABRIC



* 본 이미지의 색상과 크기는 실제 제품과 차이가 발생할 수 있습니다.

Applicable products – Exterior & Interior

적용 제품 - 건축 내외장재



Exterior

Facade

Modular

Roofing

Warehouse

Interior

Backsplash

Door

Elevator

Ceiling

PD Cover

Board

Design Concept

01

Essential Calm

고요한 안식



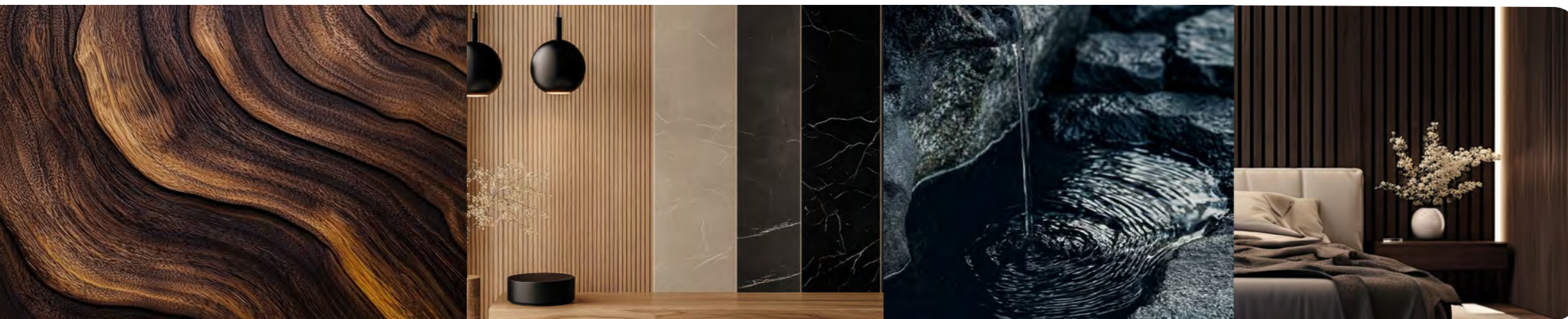
자연의 밝은 결을 담은 뉴트럴 톤을 기반으로
본질에 집중한 차분한 균형을 제안합니다.



Natural Oak & Ash

Soft Cream

Coarse Linen



Dark Walnut

Basalt & Slate

02

Deep Heritage

깊이를 더한 시간



질은 우드와 스톤 텍스처, 절제된 다크 톤의 조합으로
시간이 축적된 듯한 깊이 있는 공간을 완성합니다.

03

Raw Earth

생동하는 자연의 온기



유기적인 패턴과 얼스톤 기반의 따뜻한 채도로 온기를 더하고,
감각적이고 유연한 공간을 제안합니다.



Lime Stone

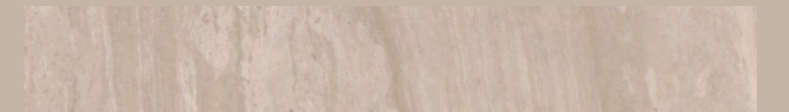
Sand Stone

Terracota

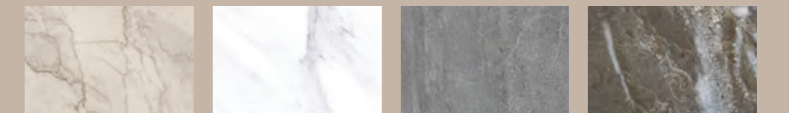
01
STONE

M-015-BG

다양한 질감을 세밀하게 재현하여 고급스럽고 견고한 표면을 구현합니다.
여러 색상과 베인 그리고 깊이감을 표현한 스톤 디자인을 제안합니다.



Flow Beige



Bolgheri

Thasos White

Basalt

Mainstone



Monte bianco

Jura Beige

Calacatta

Onix

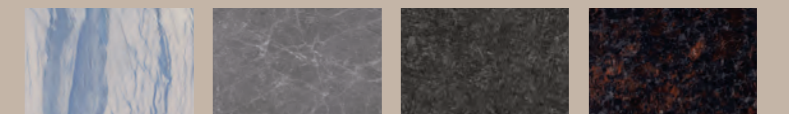


Marmara

Patagonia

Carrara Gold

Apenino

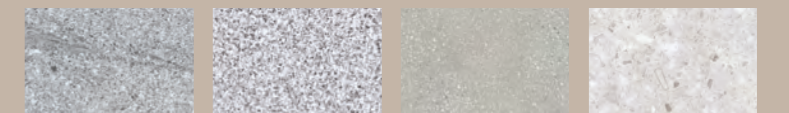


Azul Macaubas

Oska Gray

butterfly granite

Tan Brown



Bianco sardo

Granite

Granilite

Terrazzo



Sandstone

Limestone Beige

Limestone Gray

Wood Concrete



Santa Cecilia light

Giallo Verona

Crema Imperial

Cremosa



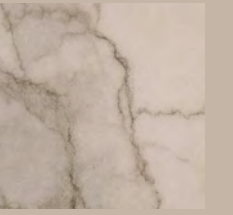
Basalt

Concrete

Concrete

Fairfaced Concrete

Interior Scene



M-015-BG





M-016-IV



M-016-LG

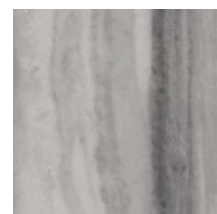
M-016-DG

Marmara

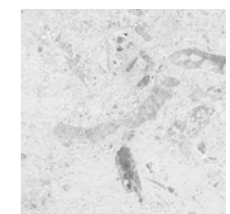
Jura Beige

M-039-W

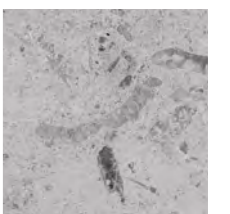
M-031-IV



M-010-BK



M-031-LG



M-031-MG

Patagonia



M-034-C

Azul Macaubas



M-042-BL



M-034-BR



M-034-G



M-042-IV

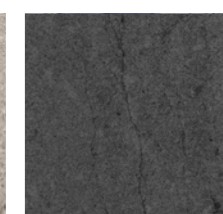


Basalt

M-017-G

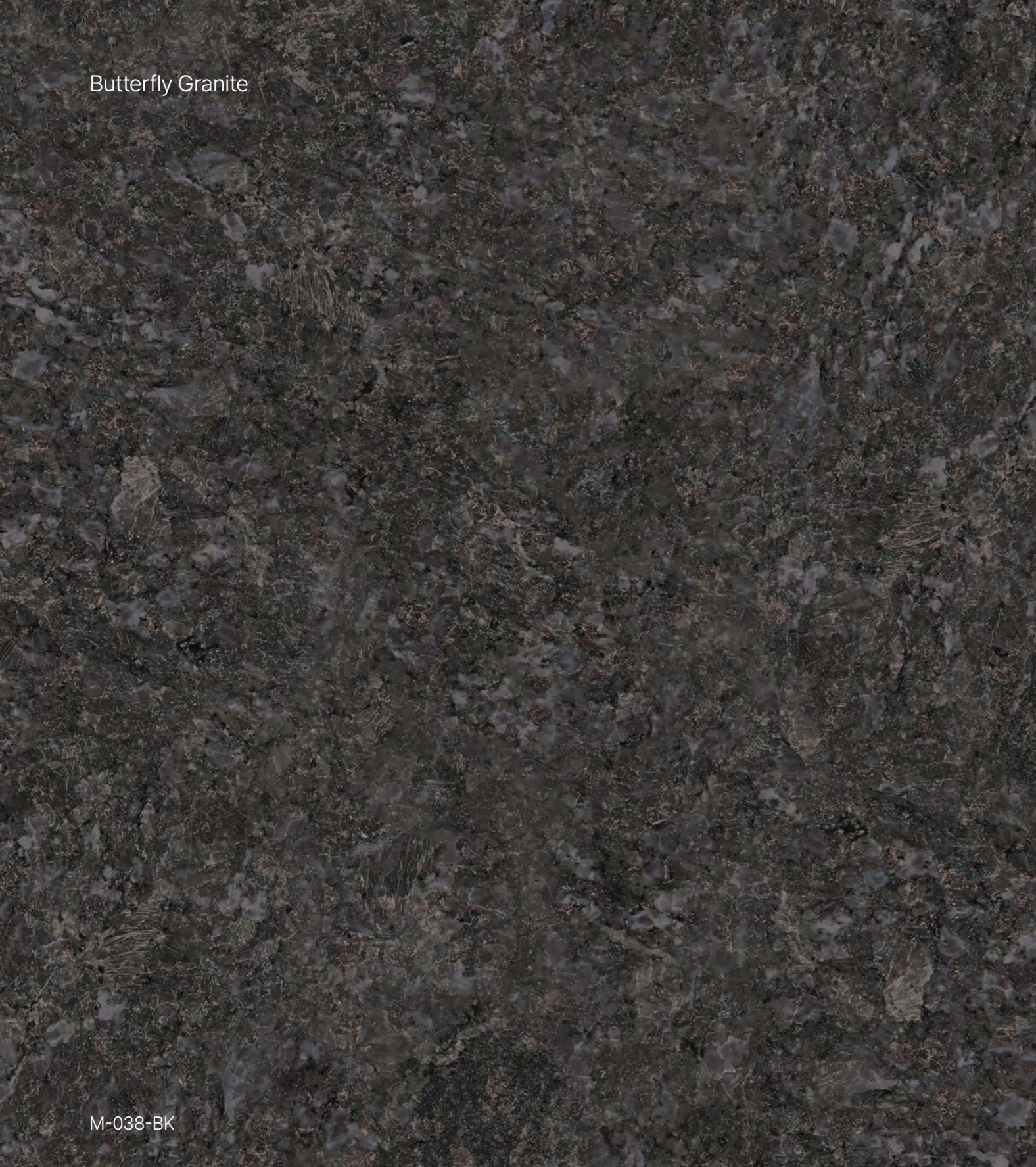


M-017-BE



M-017-DG

Butterfly Granite



M-038-BK



M-038-G

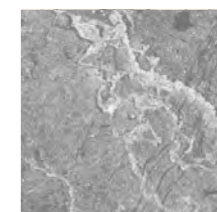


M-038-BR

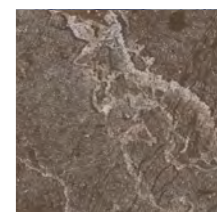
Mainstone



M-018-DBR

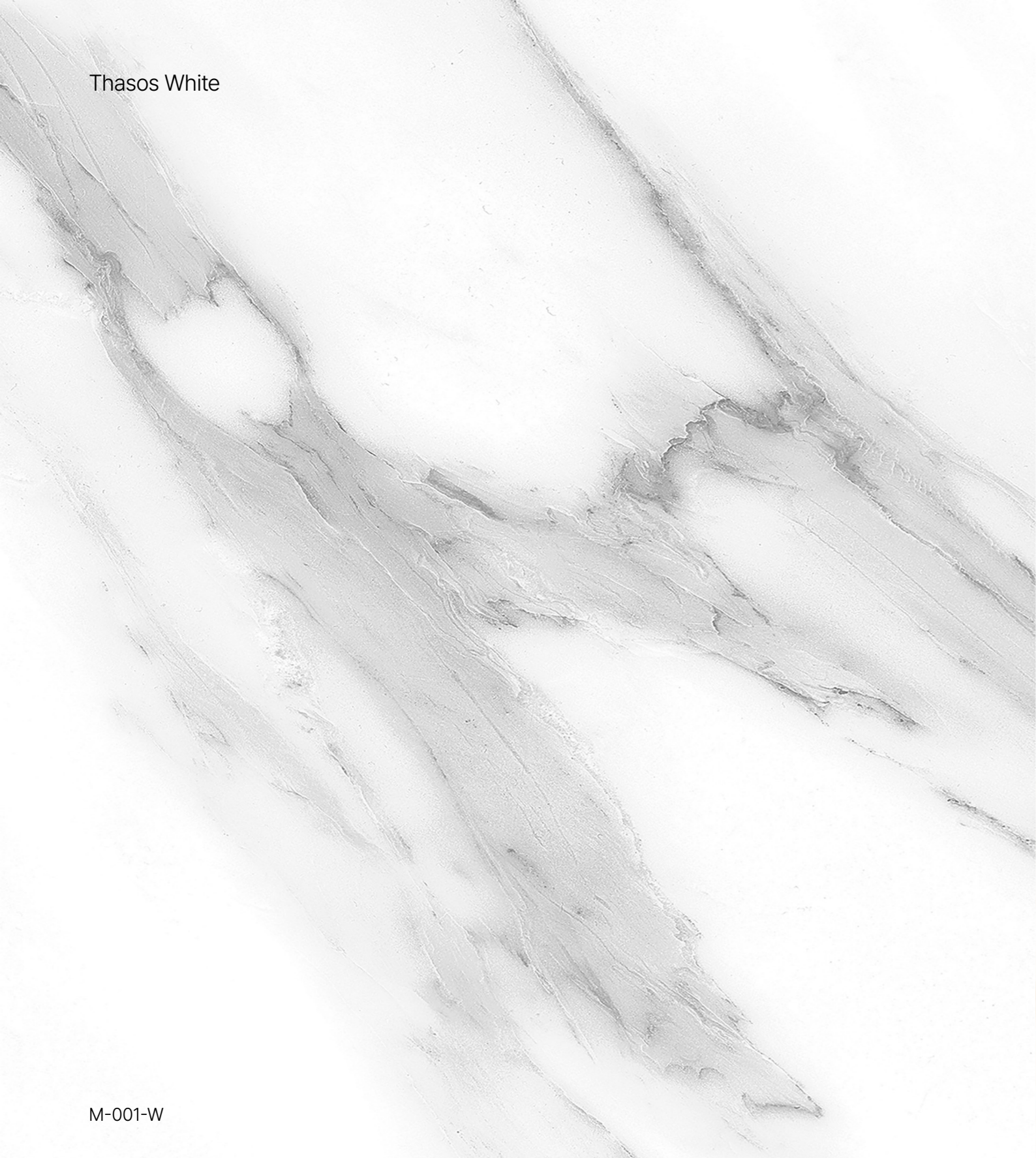


M-018-G

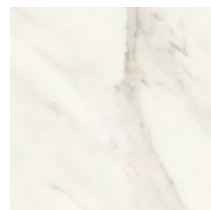


M-018-BR

Thasos White



M-001-W

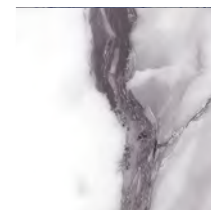


M-001-IV

Carrara Gold



M-036-W



M-036-BK

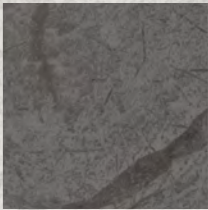
Monte bianco



M-019-LG



M-019-G



M-019-DG

Onyx

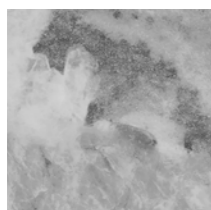


M-033-W

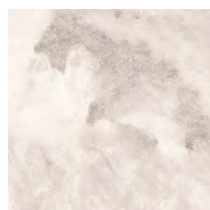
Calacatta



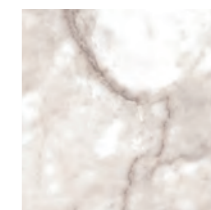
M-032-W



M-033-G



M-033-IV



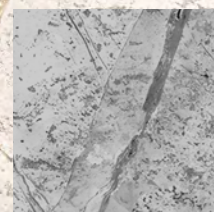
M-032-IV



M-032-BE

Apenino

ST-046-IV



M-046-G



Sandstone

Limestone Beige

ST-035-G

ST-034-BG



ST-035-LG



ST-034-W

Giallo Verona



ST-047-BG

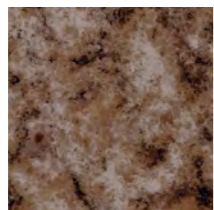
Tan Brown



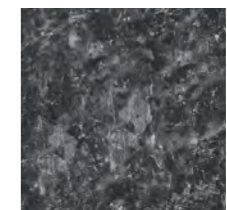
M-044-RBR



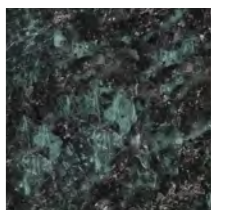
ST-047-G



ST-047-BR

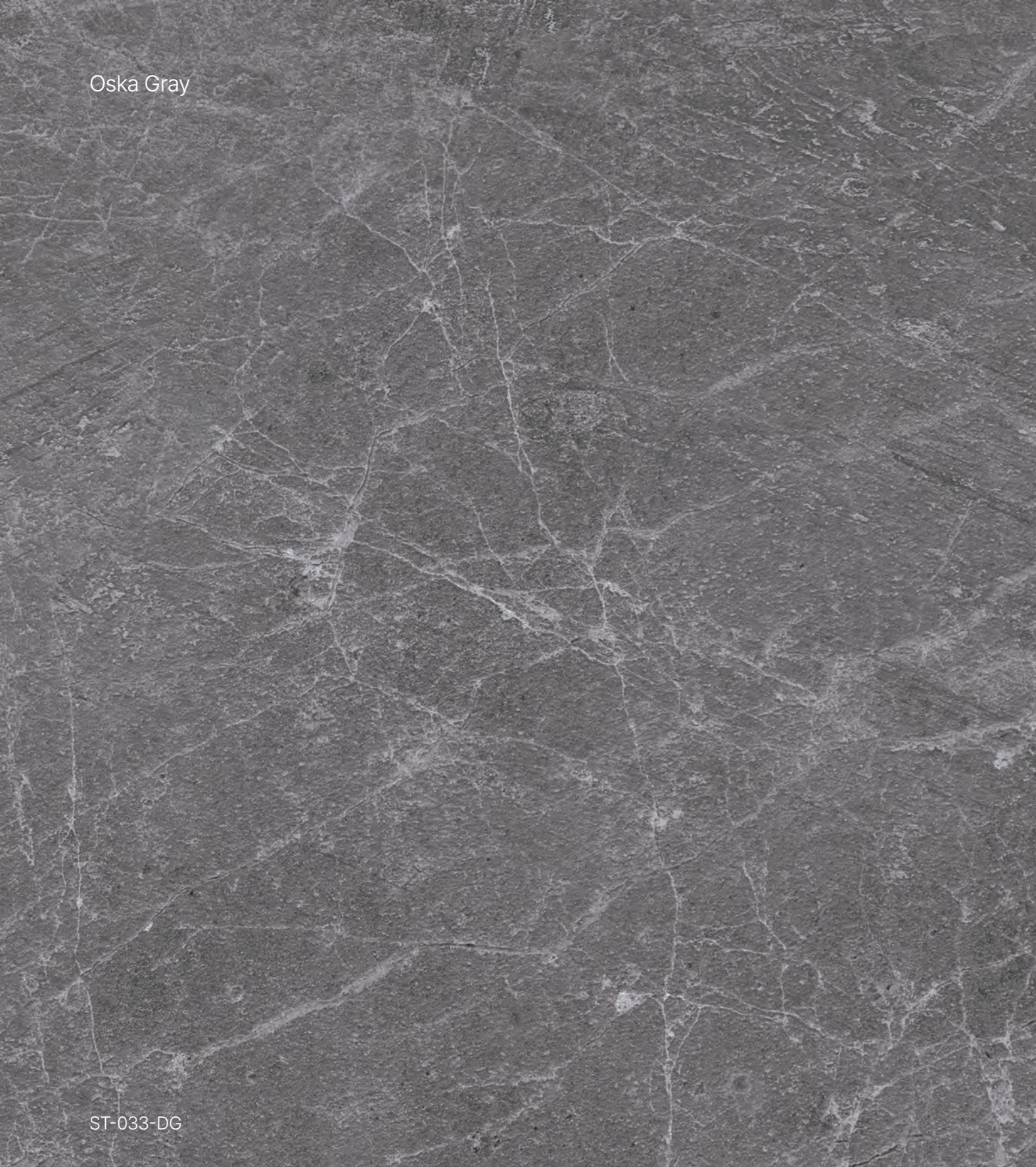


M-044-BK



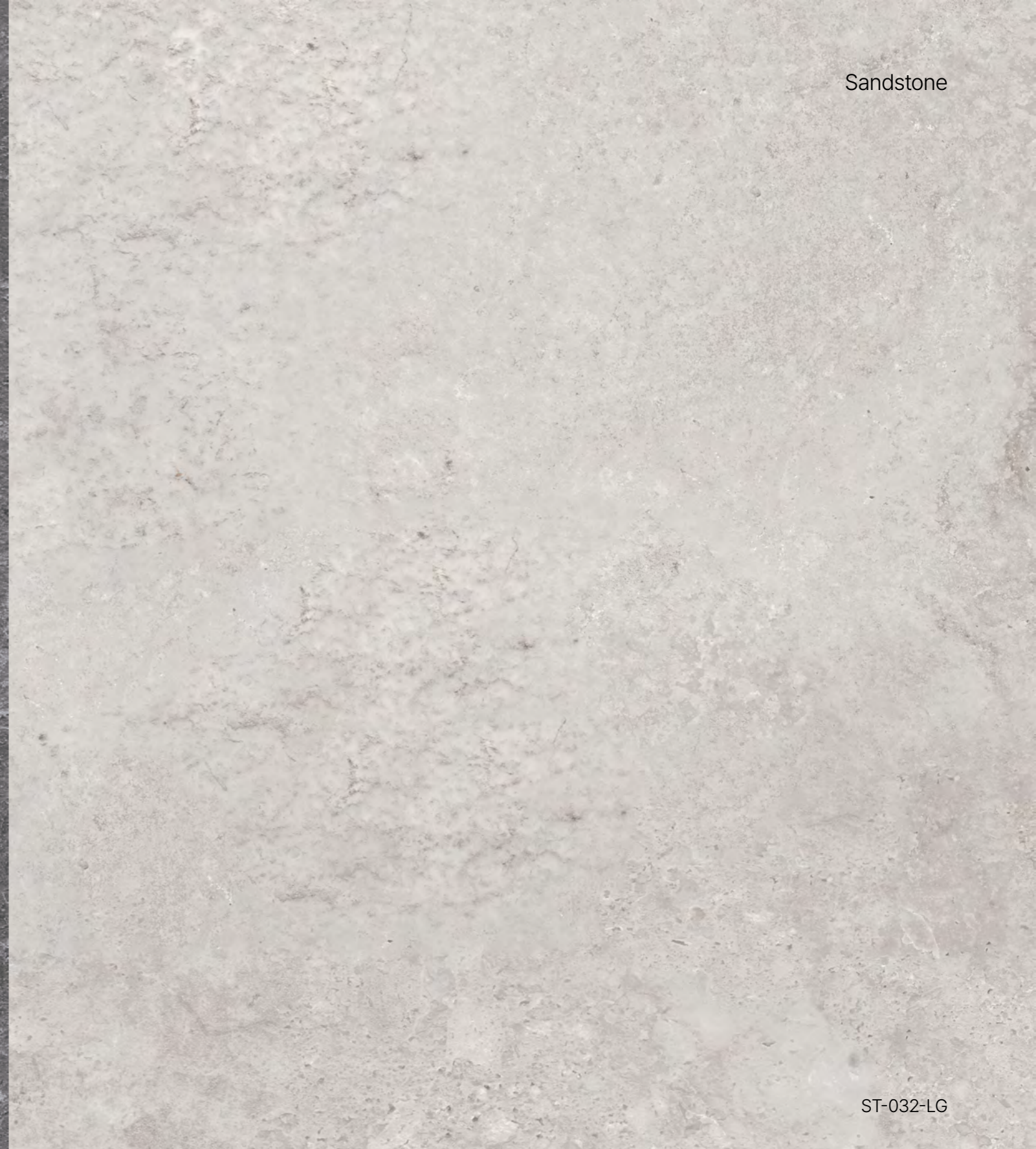
M-044-E

Oska Gray

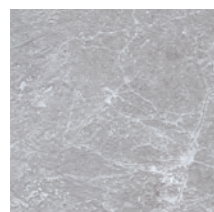


ST-033-DG

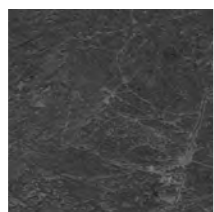
Sandstone



ST-032-LG



M-010-G



M-010-BK



ST-032-G



ST-032-BR

Crema Imperial

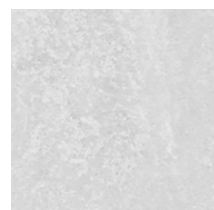


ST-052-LBR

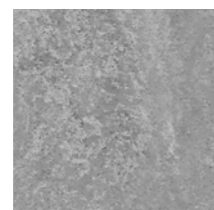


Santa Cecilia light

ST-041-BG



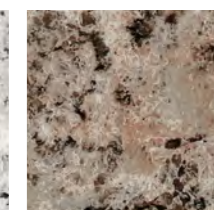
ST-052-LG



ST-052-MG



ST-041-G



ST-041-BR

Cremosa

ST-053-IV



ST-053-LG



ST-053-MG



Granite



ST-017-W

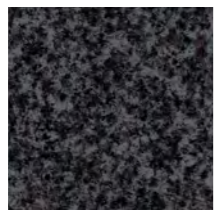
Terrazzo



ST-031-LG



ST-017-G



ST-017-BK

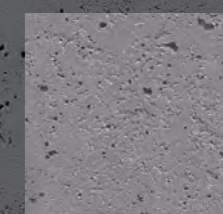


ST-031-IV



Basalt

ST-045-DG



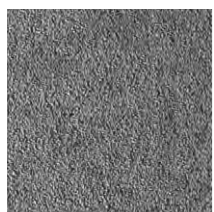
ST-045-G

Concrete

Granilite

CON-005-LG

ST-004-LG2



CON-005-MG

CON-005-DG



ST-004-LBE

ST-004-WG

Concrete

Bianco sardo

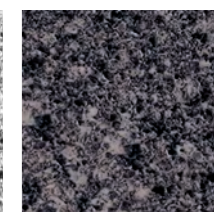
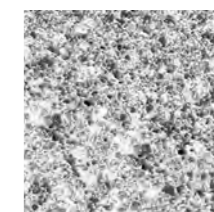
CON-003-LG

ST-006-WG



CON-003-MG

CON-003-BG



ST-006-LG

ST-006-BK

Fairfaced Concrete

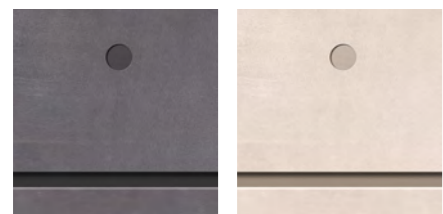
Wood Concrete



CON-012-LG

원본 대비 30% 축소 사이즈 이미지

CON-013-LG



CON-012-DG

CON-012-BG



CON-013-MG

02
WOOD

자연스러운 나뭇결과 색상 대비를 살려 따뜻하고
안정된 분위기를 완성합니다.
다양한 톤과 패턴으로 공간과 디바이스에 조화로운
우드 디자인을 제안합니다.



Ash



Oak



Oak



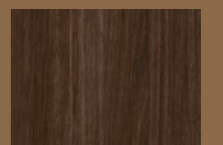
Walnut



Oak



Walnut



Dark Oak



Sycamore



Cherry



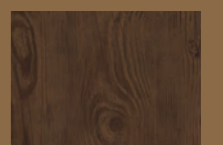
Walnut



Zebrawood



Merbau



Walnut



Maple



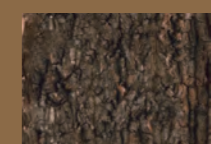
Cherry



Rosewood



Thermowood



Oak Bark

W-056-LBR

Exterior Scene



W-056-LBR



W-056-DBR



W-056-BK

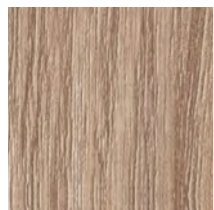
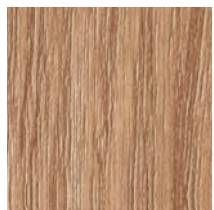


Ash

Walnut

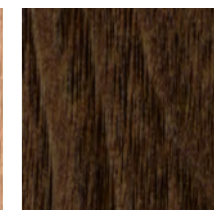
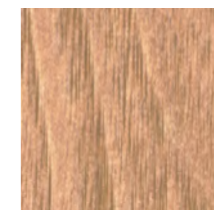
W-015-LBR

W-008-BR



W-015-BE

W-015-BG



W-008-LBR

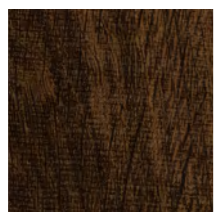
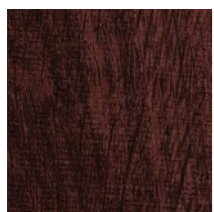
W-008-DBR

Walnut

Oak

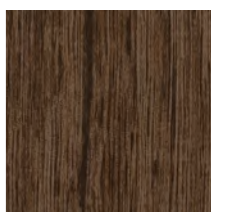
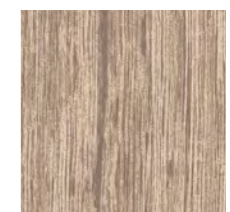
W-058-BR

W-034-BR



W-058-RBR

W-058-DBR



W-034-BG

W-034-DBR

Oak

W-004-RBR



W-004-DBR

W-004-BG

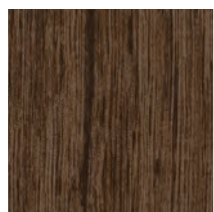
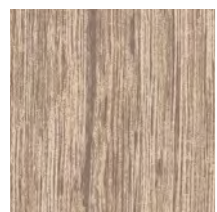


Oak

Walnut

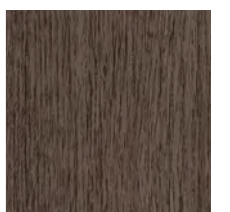
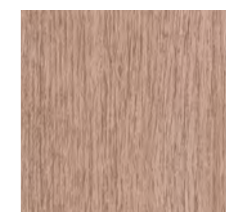
W-038-BR

W-037-DBR



W-038-BG

W-038-DBR



W-037-BE

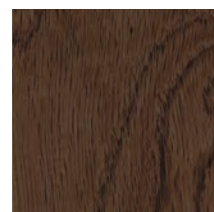
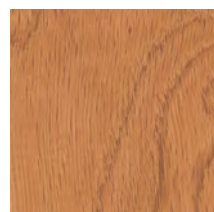
W-037-ASH

Cherry

Walnut

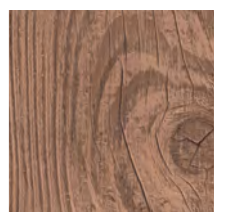
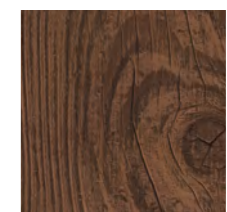
W-039-BR

W-041-DBR



W-039-LBR

W-039-DBR



W-041-BR

W-041-BG

Maple

W-046-LBR



W-046-BR

W-046-DBR

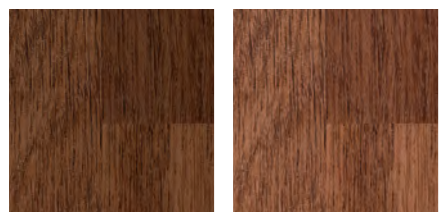


Merbau

Rosewood

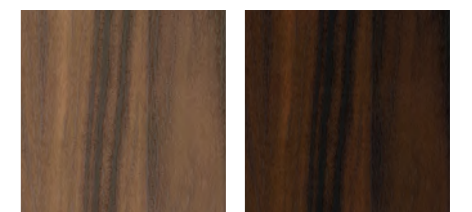
W-050-BR

W-052-RBR



W-050-DBR

W-050-RBR

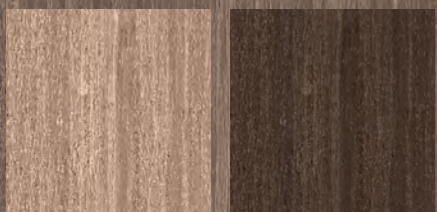


W-052-BR

W-052-DBR

Zebrawood

W-050-BR



W-053-LBR

W-053-DBR

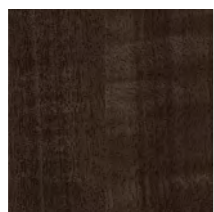
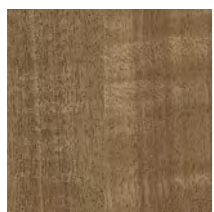


Sycamore

Cherry

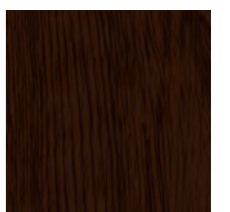
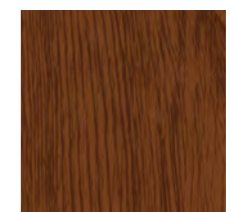
W-055-LBR

W-057-BR



W-046-BR

W-046-DBR



W-057-RBR

W-046-DBR

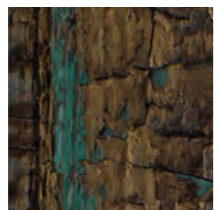
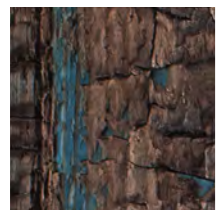
Thermowood

Oak Bark



W-051-BK

W-035-BR



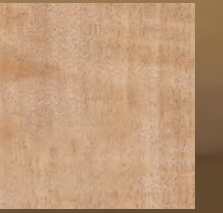
W-051-BR

W-051-YB



ST-006-BK

Interior Scene



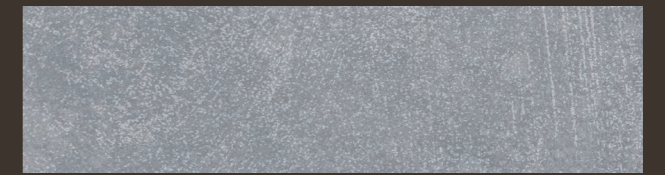
W-055-LBR



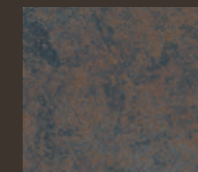
03

CORTEN

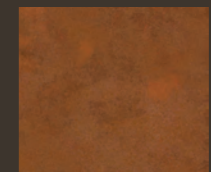
세월의 흐름이 빚어낸 오묘한 산화 질감과
깊이 있는 색채를 정교하게 구현합니다.
시간의 흐름이 느껴지는 깊이 있는 색조로
공간에 차분한 무게감을 더하는
러스티 디자인을 제안합니다.



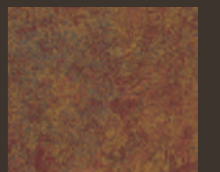
Oxide Verdigris



Anthracite



Corten



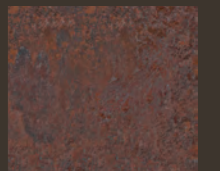
Anthracite Brown



Orange Corten



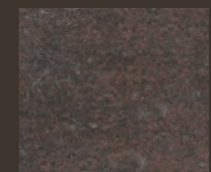
Corten Line



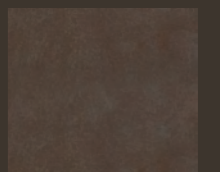
Corten



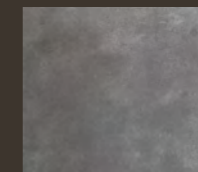
Burnished Copper



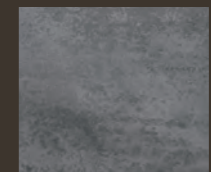
Distressed Corten



Bronze Oxide



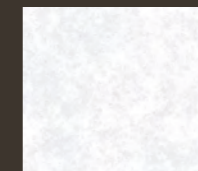
Aged Zinc



Gemmetal Corten



Matte Dark Sepia



White Corten

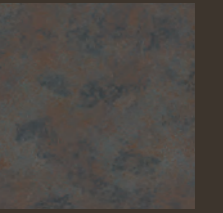


Antique Brass

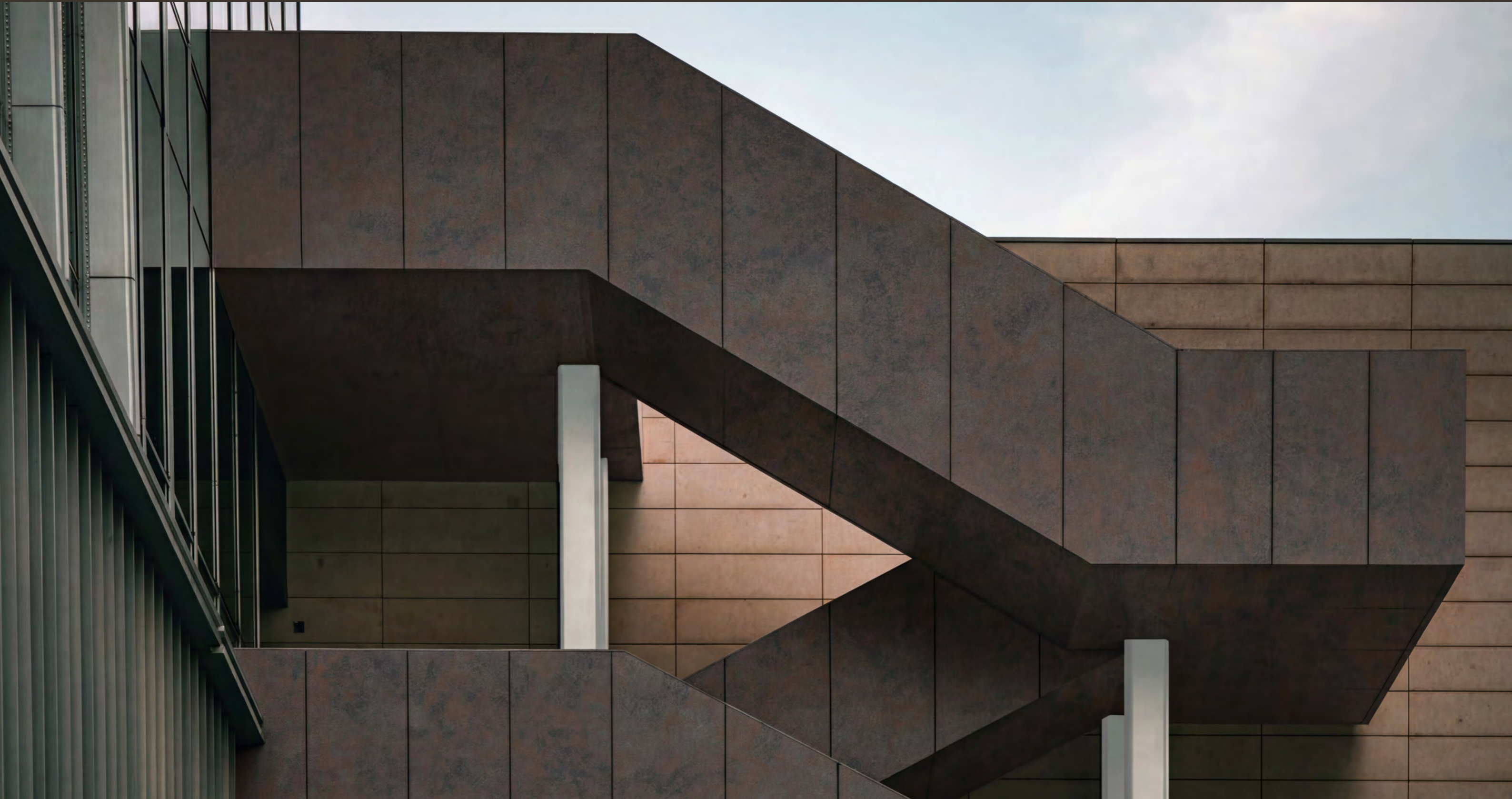


Antique Dark Brass

Exterior Scene

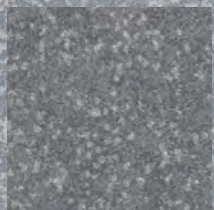


RST-002-DG



Oxide Verdigris

RST-006-LG



RST-006-MG



RST-006-DG



Corten

Anthracite

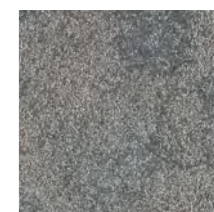
RST-001-VBR

RST-002-DG



RST-001-CBR

RST-001-MG



RST-002-LG

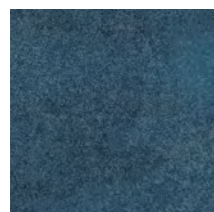
RST-002-G

Corten

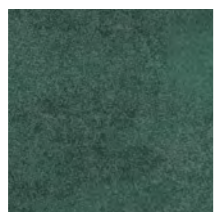
Anthracite Brown

RST-002-RD

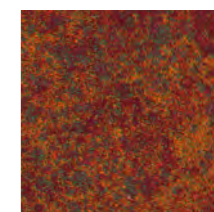
RST-002-VBR



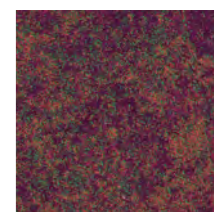
RST-002-BL



RST-002-GN

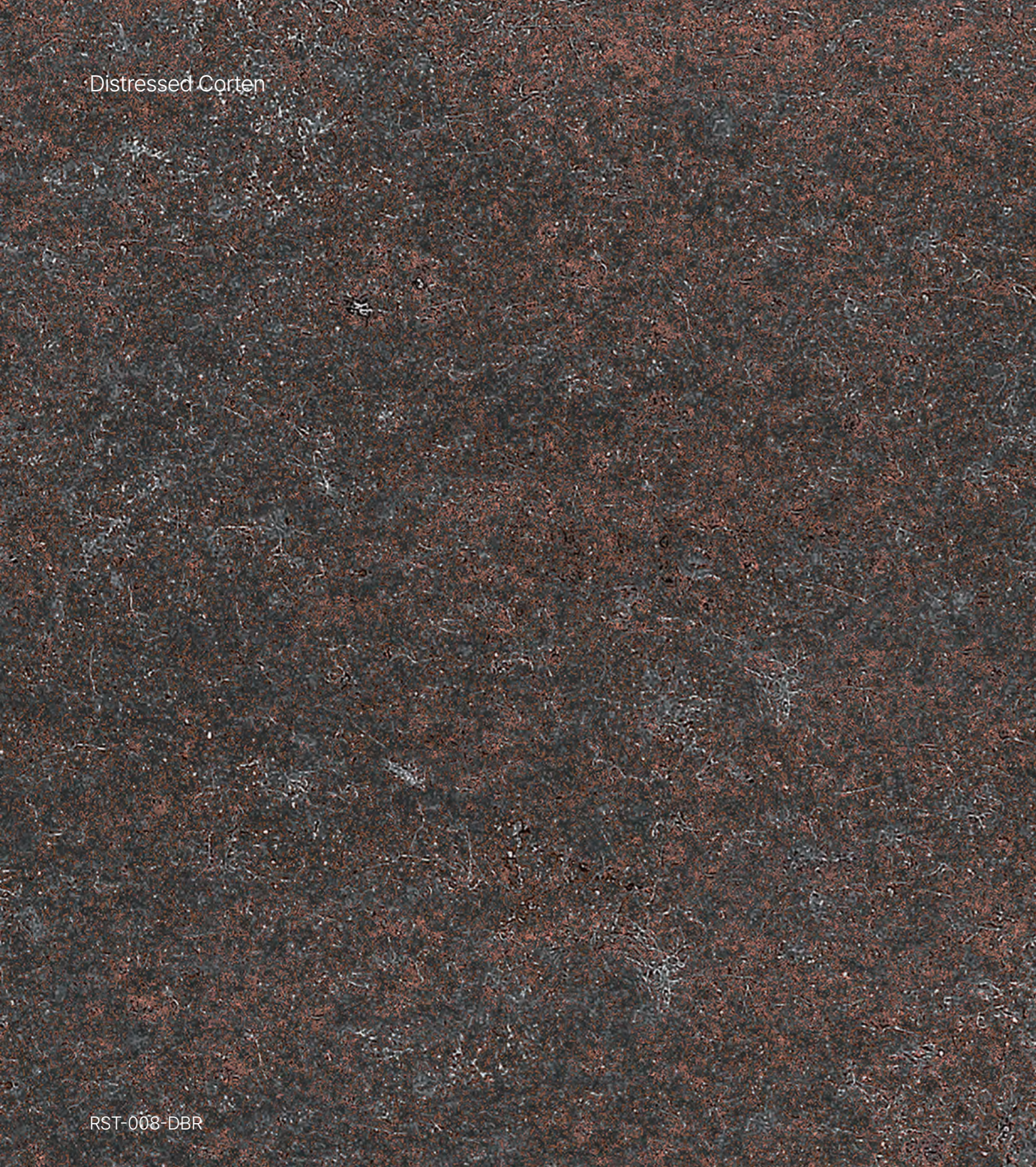


RST-002-RBR



RST-002-MG

Distressed Corten



RST-008-DBR

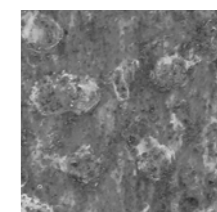


RST-008-BK

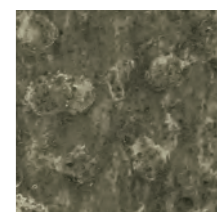
Antique Brass



RST-005-LBR



RST-005-G



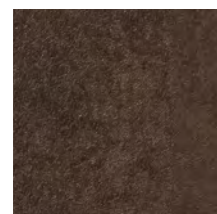
RST-005-GL

Burnished Copper

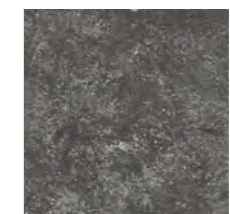
Antique Dark Brass

RST-009-BR

RST-013-DG



RST-009-DBR



RST-013-DG



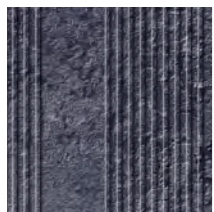
RST-013-BR

Corten Line

Bronze Oxide

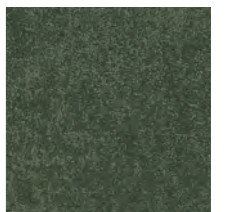
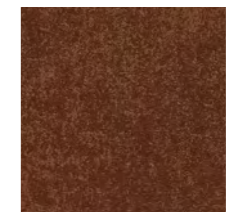
RST-003-BR

RST-007-BR



RST-003-VBL

RST-003-BK



RST-007-RBR

RST-007-GN

Matte Dark Sepia

RST-012-RBR



RST-012-BR



RST-012-GN

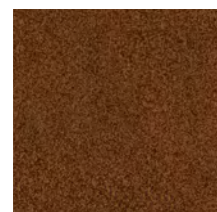


Orange Corten

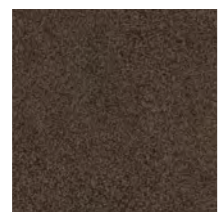
Aged Zinc

RST-031-RD

RST-010-G



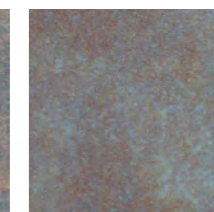
RST-031-BR



RST-031-ASH



RST-010-VBL



RST-010-VBR

White Corten

Gemmetal Corten

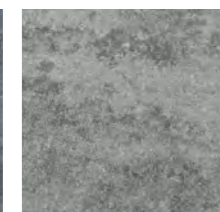
RST-035-W

RST-011-G



RST-031-G

RST-031-BR

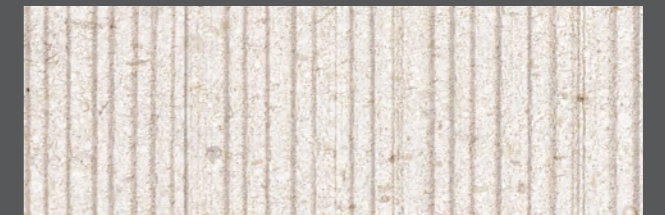


RST-011-BL

RST-011-LG

04
GEOMETRY
FABRIC

정교한 기하학 패턴과 패브릭 특유의 섬세한
직조감이 감각적인 표면을 구현합니다.
입체적인 패턴과 원사의 부드러운 질감으로
공간에 세련된 리듬감과 안락함을 선사하는
기하학 & 패브릭 디자인을 제안합니다.



Stripe Stone



Stripe Fabric



Matrix Rusty



Tile



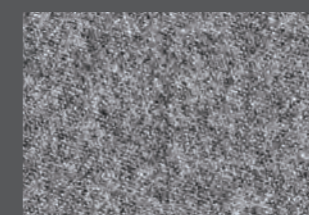
Tile



Gradation



Red Brick



Woven



Wood Louver

F-013-BG

Stripe Stone

C-039-LBR



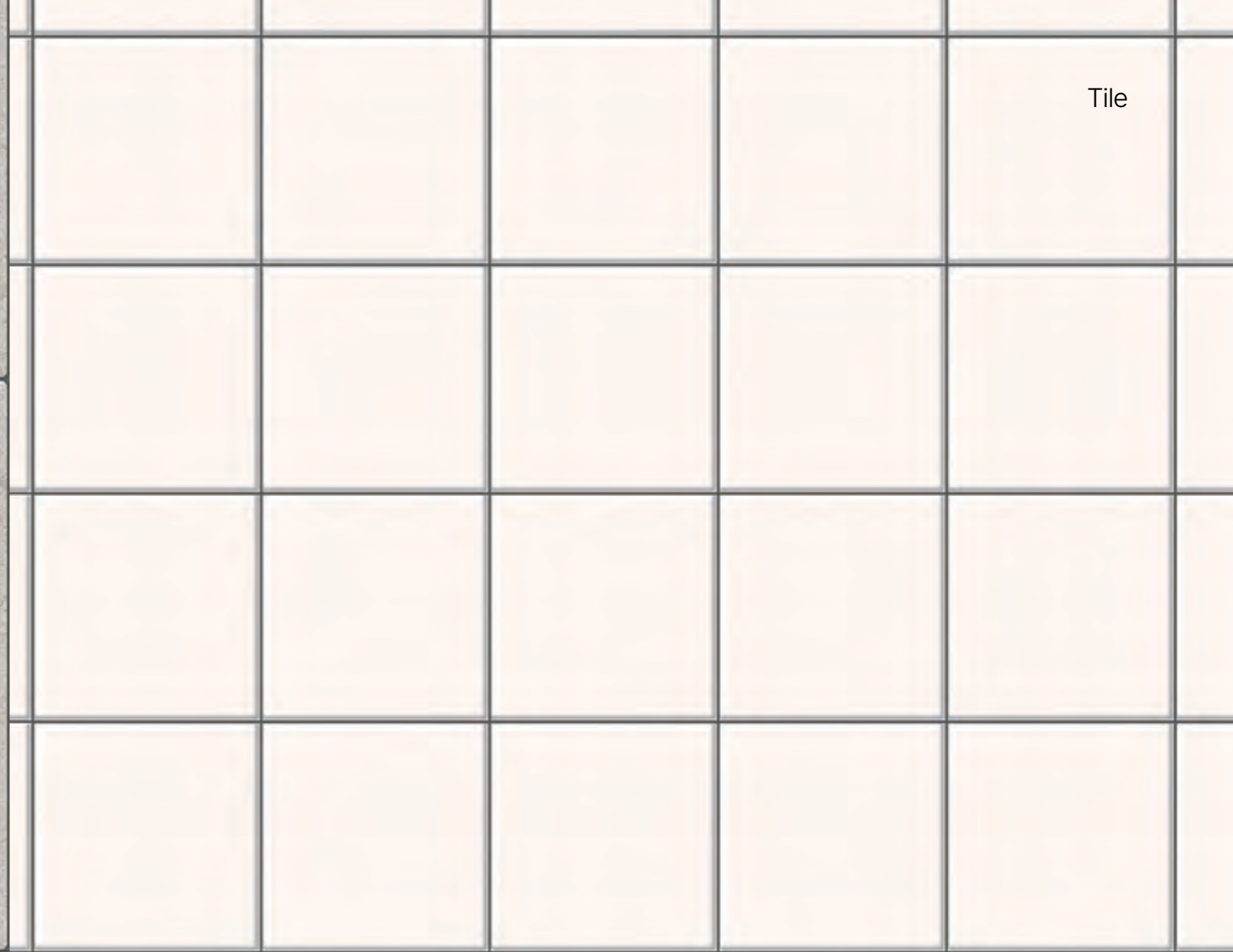
C-039-G

C-039-BR



Tile

Tile



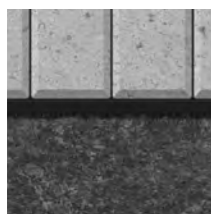
C-032-G

원본 대비 30% 축소 사이즈 이미지

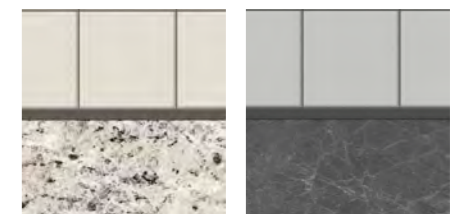


원본 대비 30% 축소 사이즈 이미지

C-031-LG



C-032-BK



C-031-BE

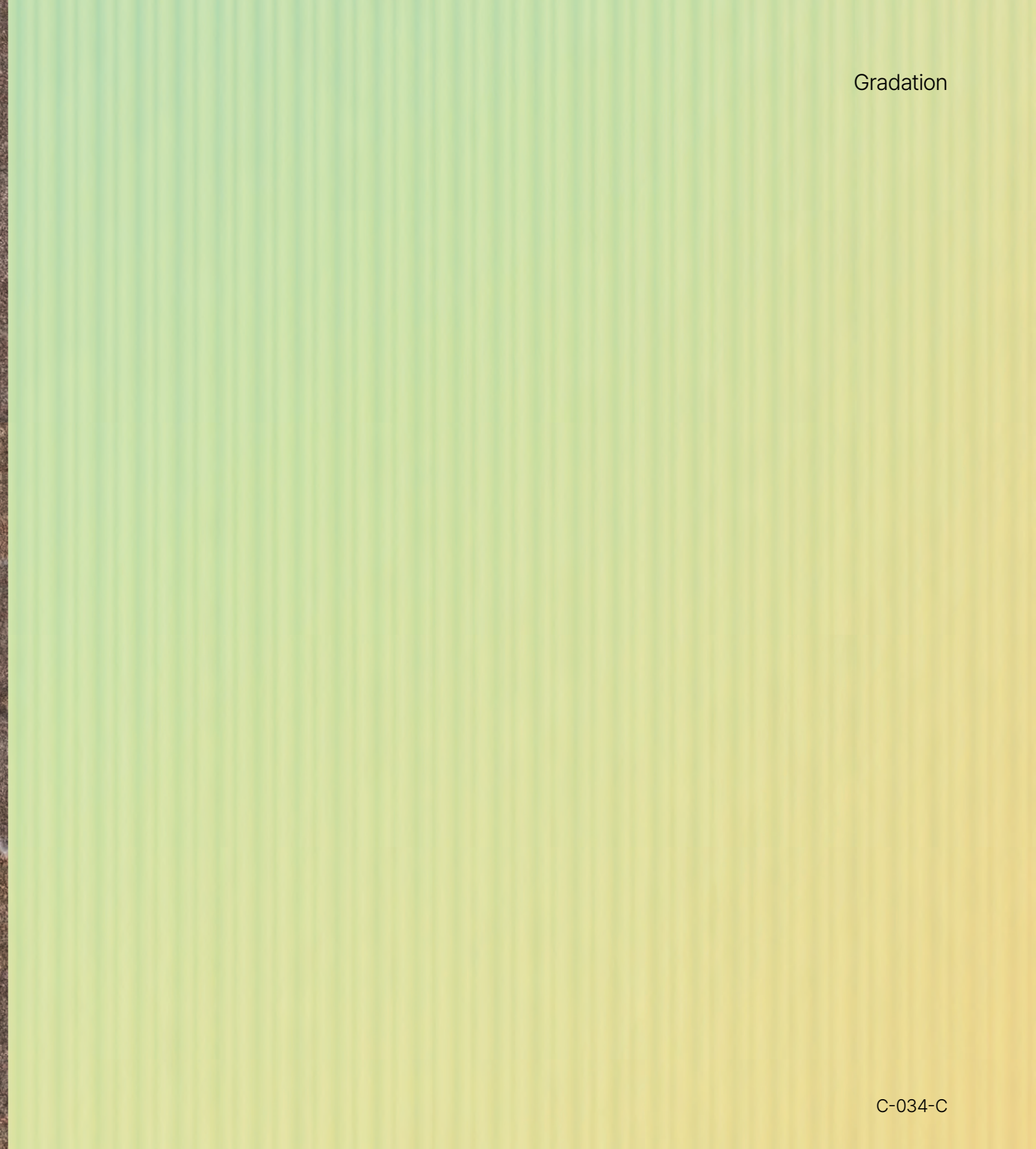
C-031-DG

Matrix Rusty

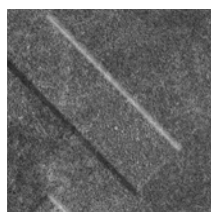


C-003-BR

Gradation



C-034-C



M-010-DG



C-034-Y



C-034-B

Red Brick



C-005-RD

Wood Louver



원본 대비 30% 축소 사이즈 이미지

C-004-BR



C-005-Y

C-005-G



C-004-LBR

Exterior Scene



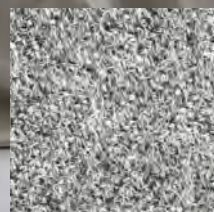
C-004-BR



Woven



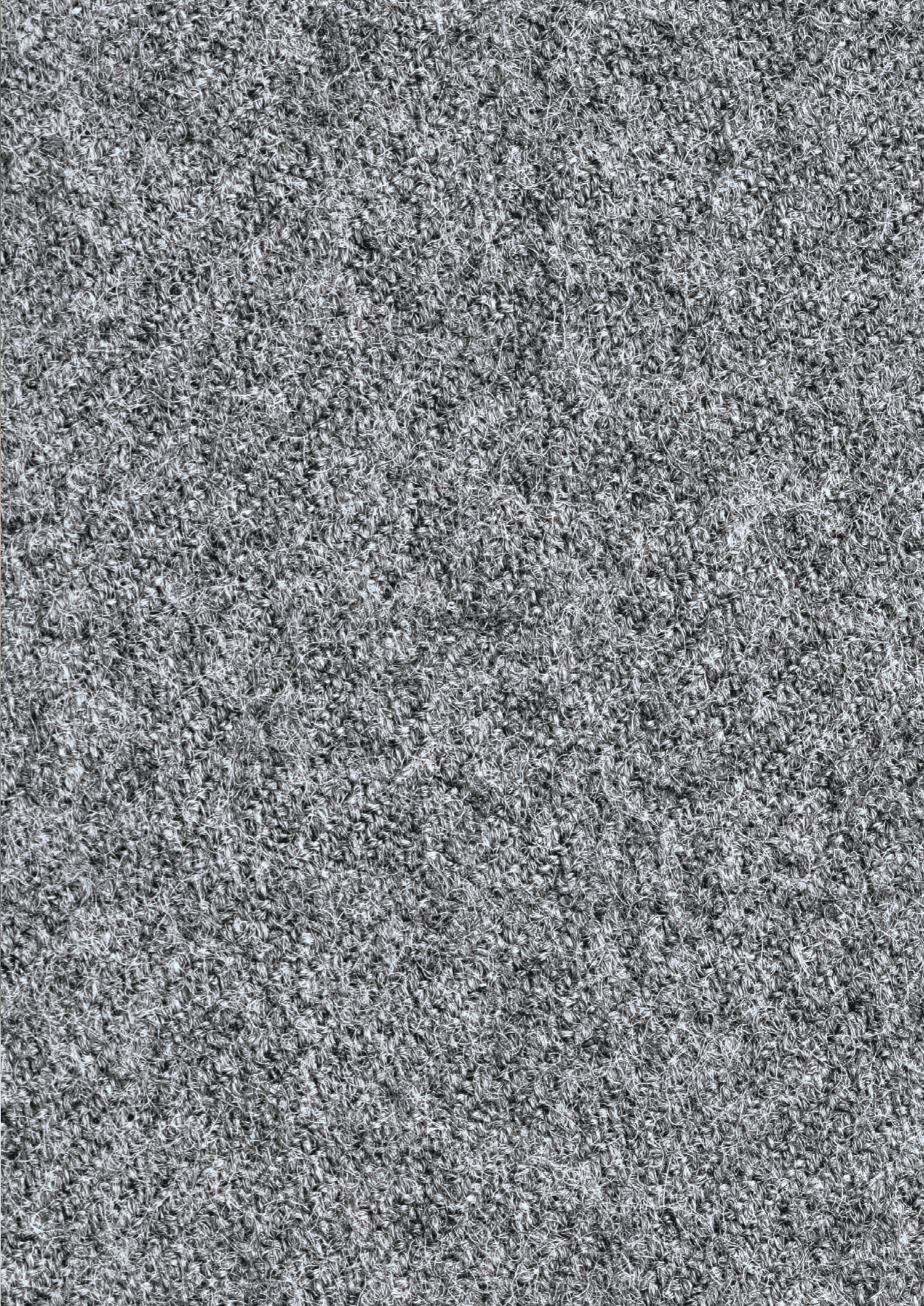
F-014-BK



F-014-G



F-014-BR



AJUSTEEL

Head Office

321, 4gongdan-ro, Gumi-si, Gyeongsangbuk-do, Korea

Design Office

Unit 605, Building B, XI Tower, 67, Seabitgongwon-ro, Gwangmyeong-si, Gyeonggi-do, Korea

Official Contact No.

+82-54-714-3000

www.ajusteel.co.kr

본 내용은 제품에 대한 정보를 제공하는 것이 목적이며, 본 카달로그의 색상과 실제 제품에는 다소 차이가 발생할 수 있습니다.