

ATEX+

CMPF DESIGN

Color | Material | Pattern | Finish

AJUSTEEL

Head Office

321, 4gongdan-ro, Gumi-si, Gyeongsangbuk-do, Korea

Design Office

Unit 605, Building B, XI Tower, 67, Seabitgongwon-ro, Gwangmyeong-si, Gyeonggi-do, Korea

Official Contact No.

+82-54-714-3000

www.ajusteel.co.kr

This content is for informational purposes only, and actual product colors may vary from those shown in this catalog.

Contents

Introduce

- 04 Company Introduction
- 06 Technology Process
- 07 Product Introduction

Pattern

- 08 Pattern Collection
- 10 Applicable products
- 12 Design Concept
- 14 Pattern Gallery

Perfecting Quality
through Commitment
and Innovation

AJUSTEEL

AJUSTEEL is a specialized steel company that has grown
by adding Effort and Technology to the essence of steel.

AJUSTEEL adds innovative technology and creative design to the essence of steel,
creating new value beyond conventional limits.

Our products go beyond function, bringing to life the future potential of materials.

We continuously strive for progress
so that customers can experience something new through our products.

By combining technology with design sensitivity,
AJUSTEEL delivers differentiated solutions
that create greater value across industries and everyday life.

1995~2008 Manufacturing Base Establishment

- 1995 Company founded
- 2003 Completion of AJUSTEEL Plant #1
(1 Slitter, 1 Shear)
- 2007 Completion of AJUSTEEL Plant #2
(2 Slitters)
- 2008 Completion of CCL #1

2011~2018 Expansion into Global Markets

- 2011 China subsidiary established
(former Hong Kong Han A Steel acquisition)
- U.S. sales office established (San Diego)
- AJUMGM established
(former MCM Tech acquisition)
- MCCL plant commissioned
- 2012 Tijuana, Mexico processing plant completed
- 2015 C P L #1 & #2 commissioned

- 2018 AJUMCM Gumi plant completed
CPL #2 commissioned
CCL #2 completed
- 2019 AJU Mexico #2 plant completed

2020~ Becoming an Indispensable Company

- 2020 Acquisition of EGL line
(former Doowon Steel acquisition)
- Listed on KOSPI (Korea Stock Exchange)
- 2021 Completion of
Gimcheon CCL #3 and HMP #1
- 2022 Completion of CCL #4 and HMP #1
- 2023 Completion of AJU Mexico #3 plant
(Aluminum extrusion)
- Establishment of AJUSTEEL Gumi Atex Center
- Completion of AJU Mexico #4 plant (Oven plant)
- Completion of AJUSTEEL Gimcheon CGCL
- 2024 Completion of AJU Poland color plant
- 2025 Joined Dongkuk Steel Group
(Dongkuk CM as major shareholder)

Capacity

Total
74
Million | Tons

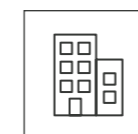
Color
34
Million | Tons

Plating
40
Million | Tons

Total Production,
Dongkuk
Steel Group
888
Million | Tons

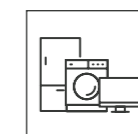
AJUSTEEL	Galvanized Products(400K tons)
	Color(340K tons)
Dongkuk CM	Galvanized Products(1,740K tons)
	Color(850K tons)
Dongkuk Steel	Heavy Plate(1,500K tons)
	Reinforcing Bar(2,750K tons)
	Structural Steel(1,300K tons)

Business



Interior / Exterior Building Materials

Interior & Exterior Materials | Fire Doors | Elevators |
System Bathrooms



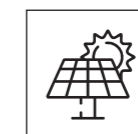
Visual / Home Appliances

LCD | TV | Washing Machine | Refrigerator | Oven |
Premium Built-in Materials



Automotive / Secondary Battery / Trailer Materials

Headlamp · EV Inverter MCCL | EV Battery Cell Case |
Trailer Frames, Extrusions, Hot-Rolled Processing Center



High Corrosion-Resistant Steel Materials

Solar Structures | Smart Farms | Building Structures |
KEPCO Structures

Technology Process

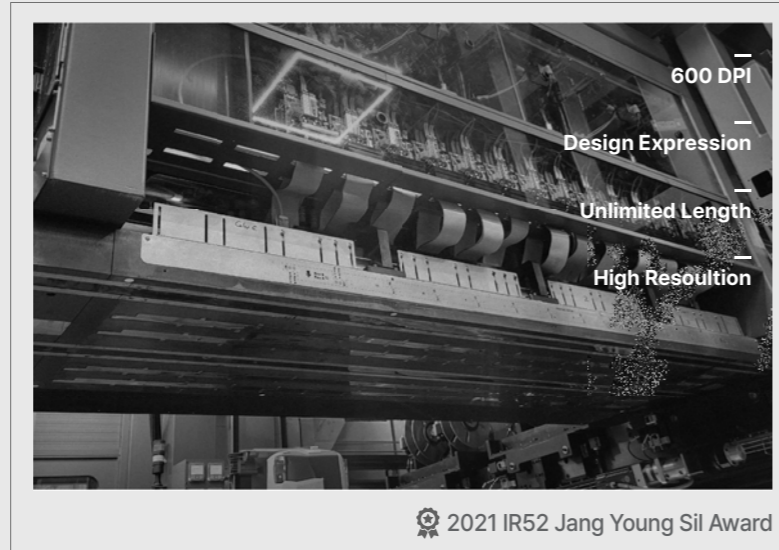
DP Digital Print
High-resolution roll-to-roll printing technology with ultra-fast processing

Specification

Width ~1407.9mm
Length No Limits
Resolution H/W 300dpi
S/W 1200dpi

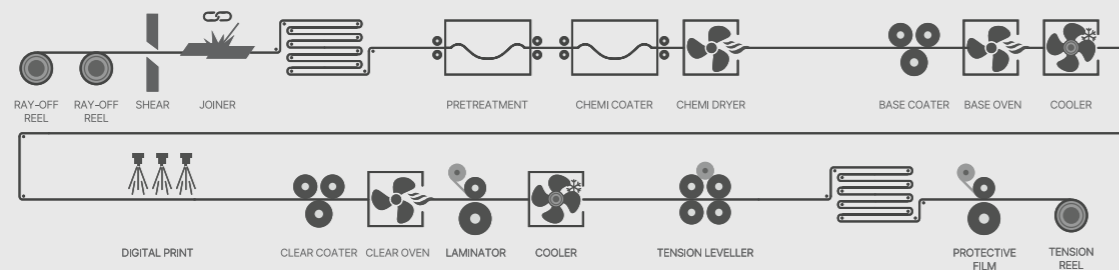
Number of facility

2EA C1 DP Roll to Roll
C4 DP Roll to Roll

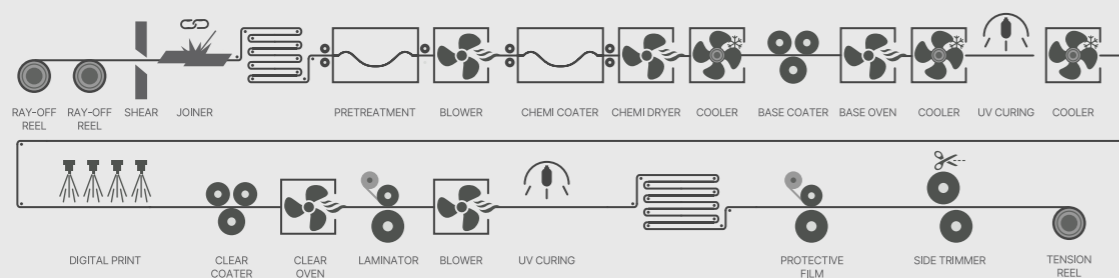


Manufacturing Process

C1 DP



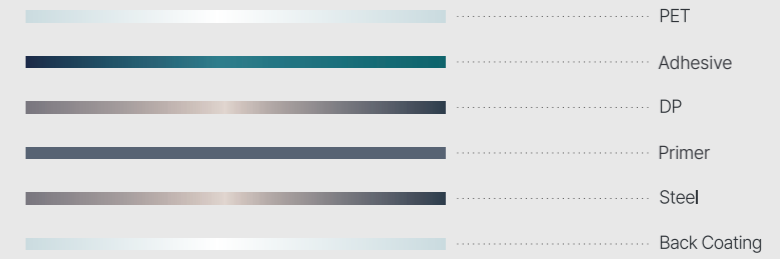
C4 DP



Product Introduction

GLAS:TEEL Digital Glass + Steel
Glass-like Clarity, Steel-like Versatility

Product Layer



Features

- Excellent Quality**
 - 4H High Hardness
 - High reliability in alkali, corrosion, and acid resistance
 - Enables flexible processing
- UV Curing Treatment**
 - Achieves a glass-like appearance with high light transmittance through UV curing technology
 - Uses PET film for a refined and premium appearance
- Semi-Noncombustible Product**
 - Certified as a semi-noncombustible material with surface treatment under 0.1 mm

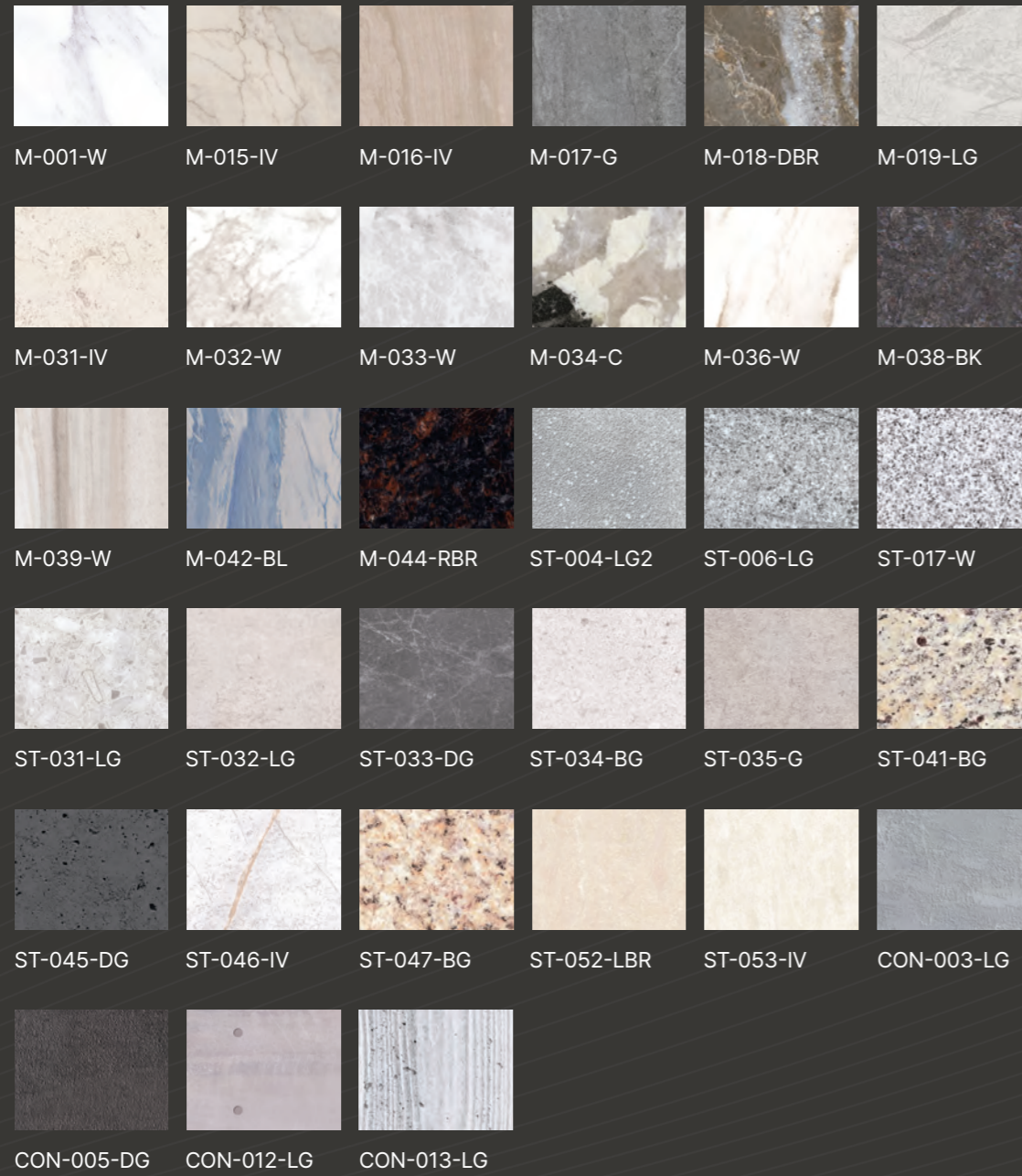
Specification

Category	Test Conditions	Specifications	Results
Mechanical Properties	Heat Resistance	120°C for 8 hrs	No defects OK
	Humidity Resistance	40°C, 95% RH for 24 hrs	No defects OK
	Boiling Water Resistance	Immersion in 98±2°C water for 30 min + 30 min at room temperature	No defects OK
	Impact Resistance	DuPont method: 500g, ø1/2", 500mm	No defects OK
	Erichsen Cupping	Indentation speed: 1mm/s	Min. 3mm OK
	Adhesion	1mm Cross-cut tape test, 100/100	No defects OK
	Pencil Hardness	Mitsubishi uni pencil (750g)	Min. 3H OK
Chemical Properties	Cold Resistance	-10°C for 10 hrs	No defects OK
	Acid Resistance	5% CH ₃ COOH (Acetic acid) for 72 hrs	No defects OK
	Alkali Resistance	5% Na ₂ CO ₃ (Sodium carbonate) immersion for 72 hrs	No defects OK
	Detergent Resistance	5% Synthetic detergent (Bleach) immersion for 240 hrs	No defects OK
	Salt Spray	5% NaCl, X-cut specimen for 240 hrs	No defects OK
	Stain Resistance	Red lipstick for 24 hrs	No defects OK

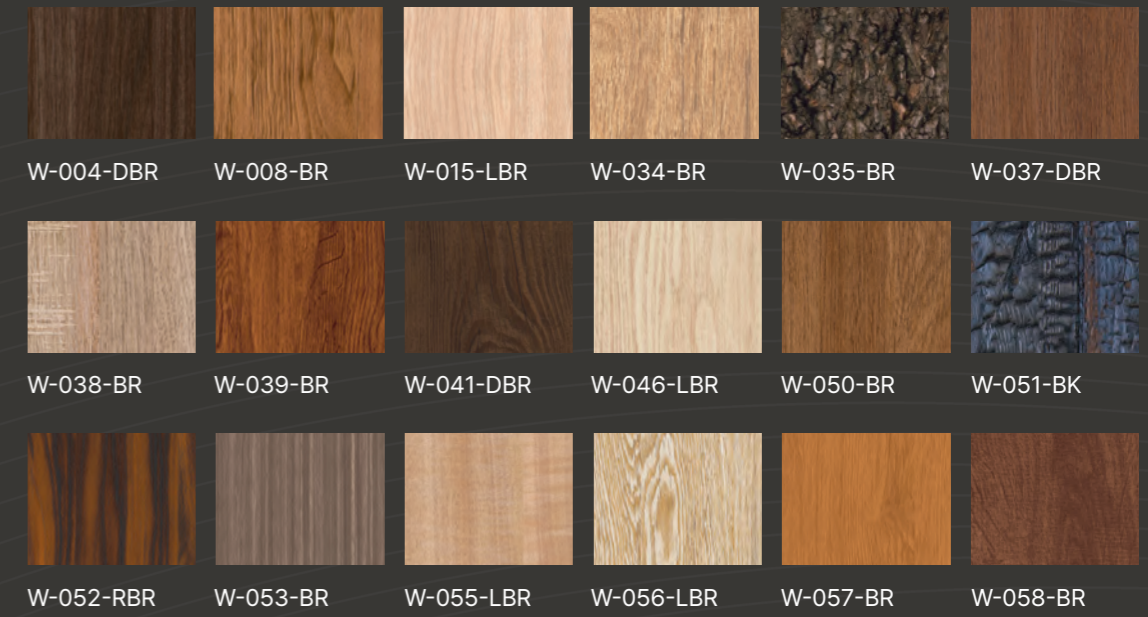
Pattern collection

Digital print

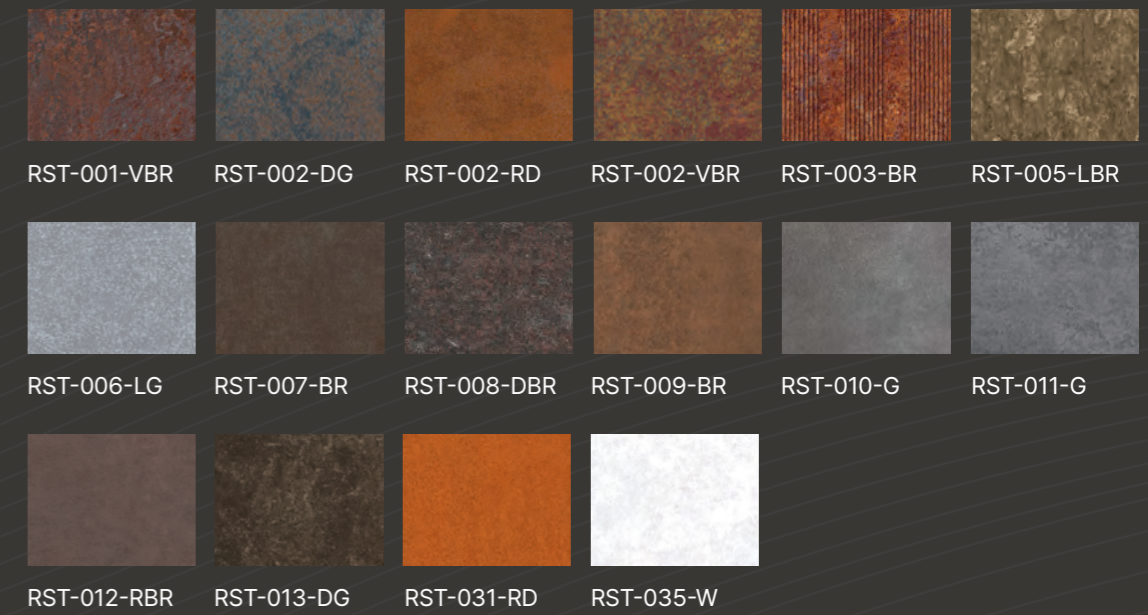
STONE



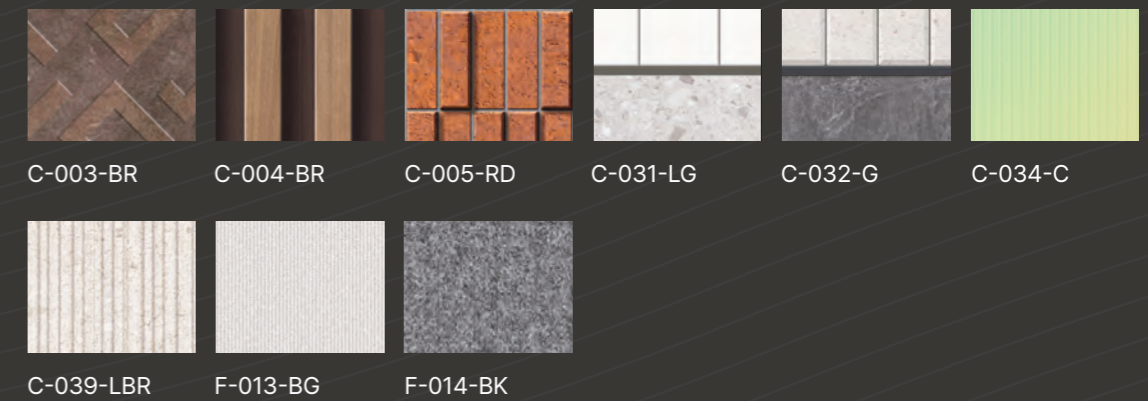
WOOD



CORTEN



GEO METRY & FABRIC



* The color and size of this image may differ from the actual product.

Applicable products – Exterior & Interior



Exterior

Facade

Modular

Roofing

Warehouse

Interior

Backsplash

Door

Elevator

Ceiling

PD Cover

Board

Design Concept

01

Essential Calm A Serene Sanctuary



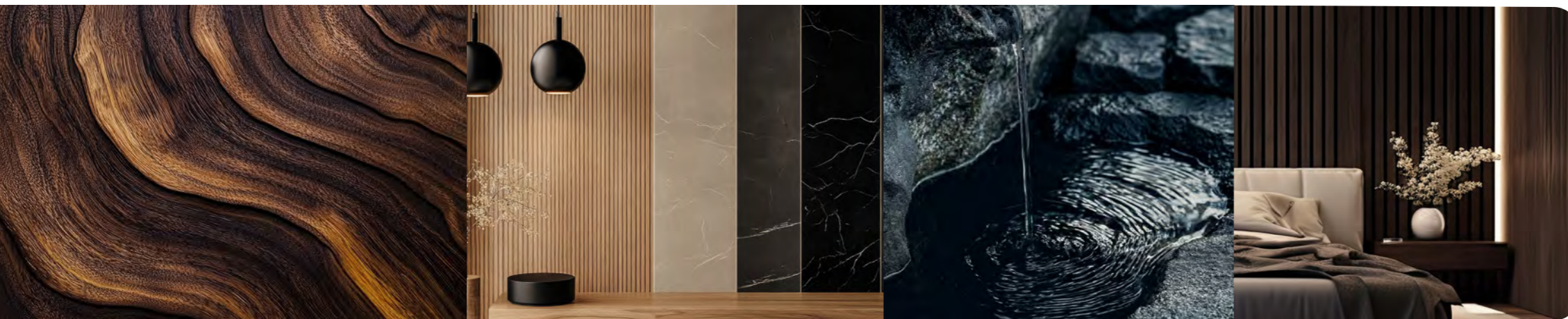
We offer a calm balance focused on the essentials, rooted in neutral tones that highlight the bright, natural grain.



Natural Oak & Ash

Soft Cream

Coarse Linen



Dark Walnut

Basalt & Slate

02

Deep Heritage Timeless Depth



A combination of deep wood, stone textures, and understated dark tones evokes a sense of timeless depth and sophistication.

03

Raw Earth Vibrant Natural Warmth



Infusing warmth through organic patterns and earth-toned hues, this collection delivers a sophisticated and versatile aesthetic.



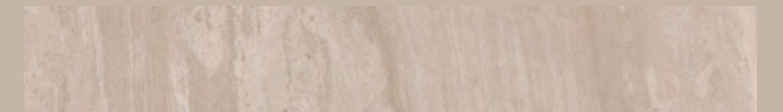
Lime Stone

Sand Stone

Terracota

M-015-BG

Our precision-engineered textures create sophisticated, durable surfaces with meticulously reproduced details. Stone designs feature a rich palette of colors, intricate veining, and a striking sense of depth.



Flow Beige



Bolgheri

Thasos White

Basalt

Mainstone



Monte bianco

Jura Beige

Calacatta

Onix



Marmara

Patagonia

Carrara Gold

Apenino

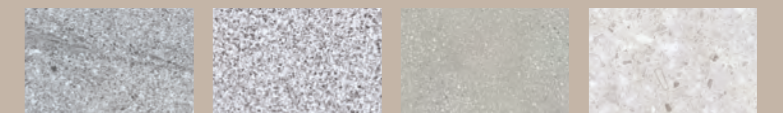


Azul Macaubas

Oska Gray

butterfly granite

Tan Brown



Bianco sardo

Granite

Granilite

Terrazzo



Sandstone

Limestone Beige

Limestone Gray

Wood Concrete



Santa Cecilia light

Giallo Verona

Crema Imperial

Crema



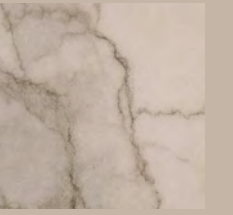
Basalt

Concrete

Concrete

Fairfaced Concrete

Interior Scene

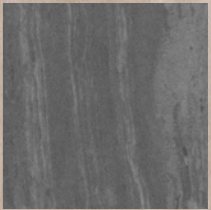


M-015-BG





M-016-IV



M-016-LG

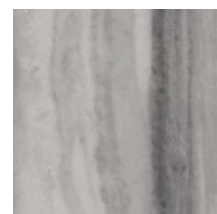
M-016-DG

Marmara

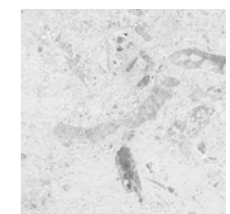
Jura Beige

M-039-W

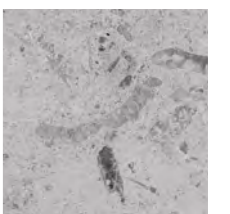
M-031-IV



M-010-BK



M-031-LG



M-031-MG

Patagonia



M-034-C

Azul Macaubas



M-042-BL



M-034-BR



M-034-G



M-042-IV

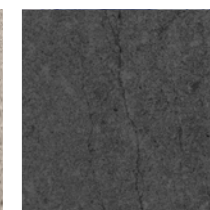


Basalt

M-017-G

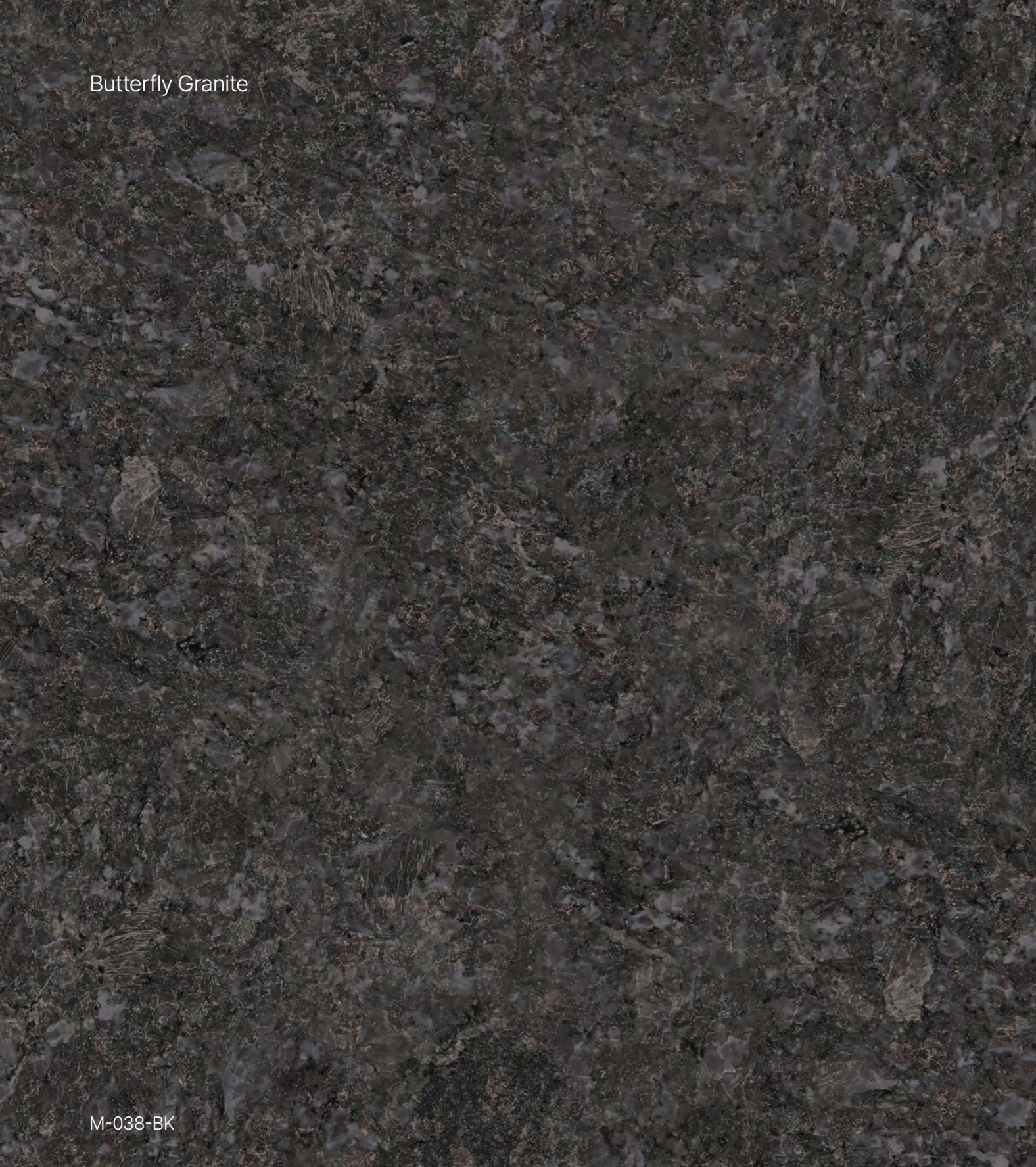


M-017-BE



M-017-DG

Butterfly Granite



M-038-BK

Mainstone



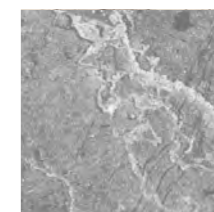
M-018-DBR



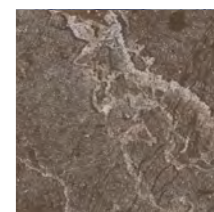
M-038-G



M-038-BR

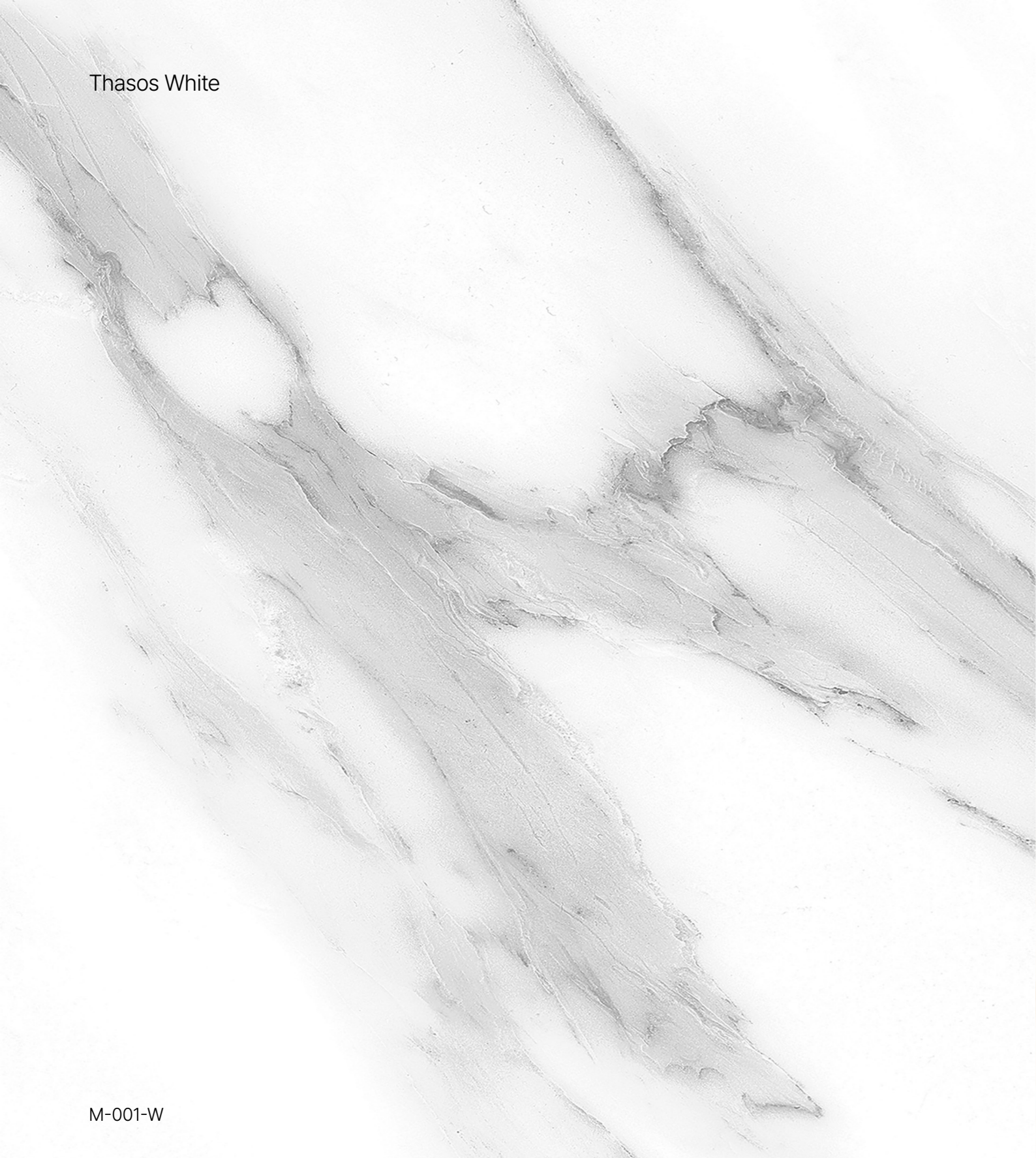


M-018-G

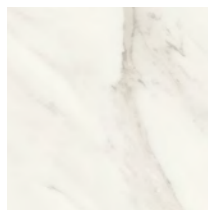


M-018-BR

Thasos White



M-001-W

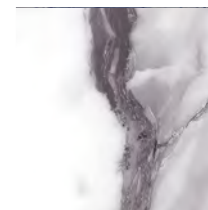


M-001-IV

Carrara Gold



M-036-W



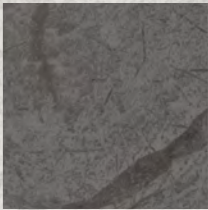
M-036-BK



M-019-LG



M-019-G



M-019-DG

Onyx

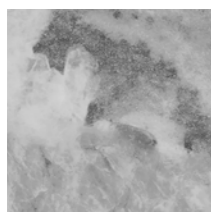


M-033-W

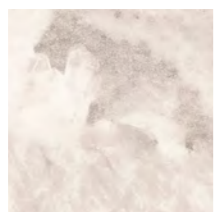
Calacatta



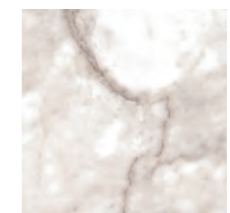
M-032-W



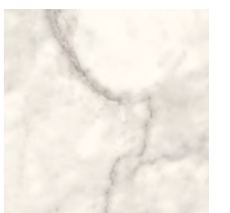
M-033-G



M-033-IV



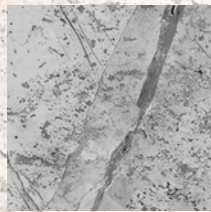
M-032-IV



M-032-BE

Apenino

ST-046-IV



M-046-G



Sandstone

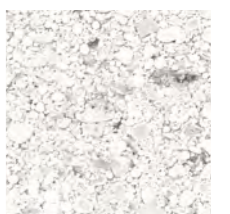
Limestone Beige

ST-035-G

ST-034-BG



ST-035-LG



ST-034-W

Giallo Verona



ST-047-BG

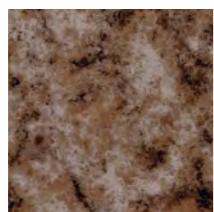
Tan Brown



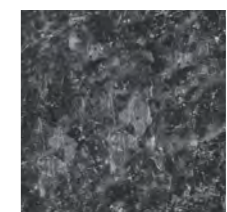
M-044-RBR



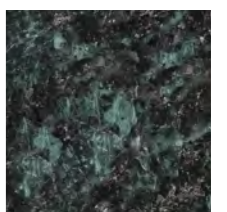
ST-047-G



ST-047-BR

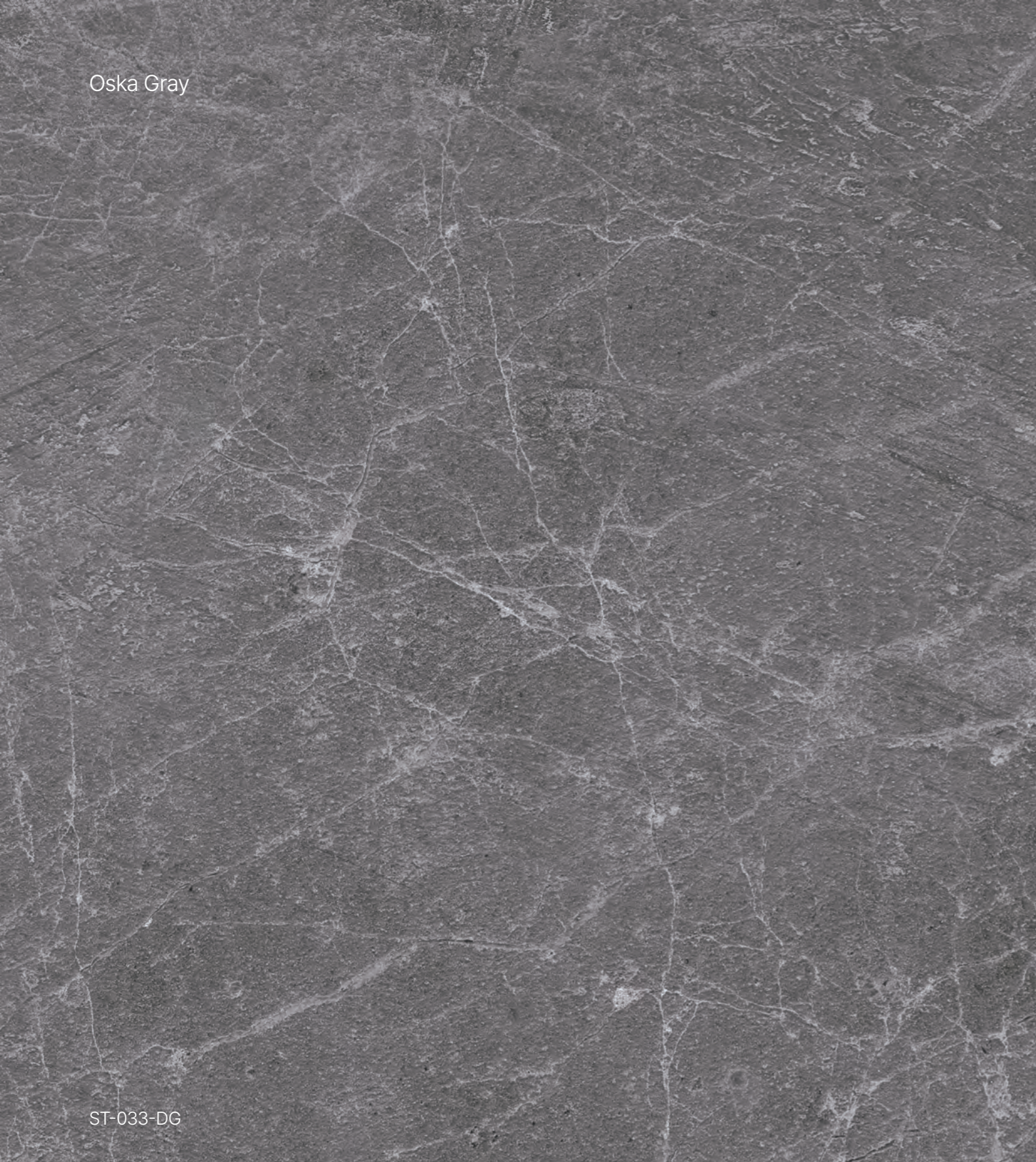


M-044-BK



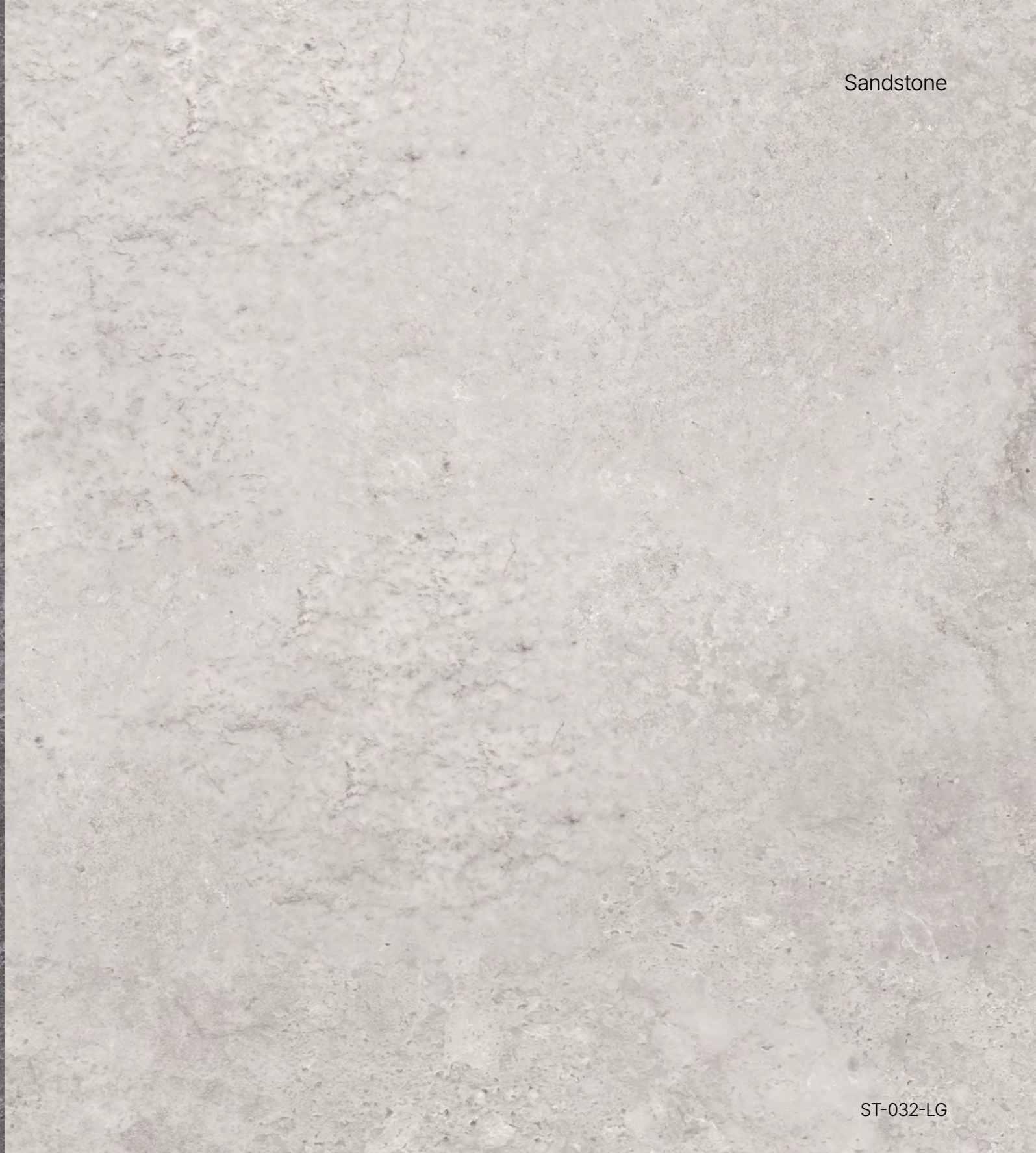
M-044-E

Oska Gray

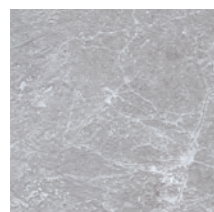


ST-033-DG

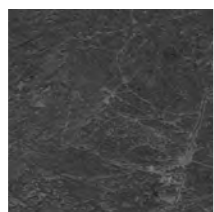
Sandstone



ST-032-LG



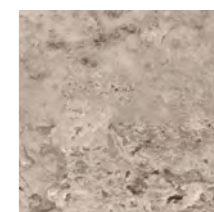
M-010-G



M-010-BK



ST-032-G



ST-032-BR

Crema Imperial

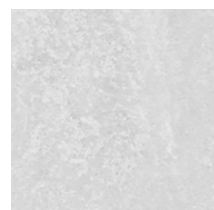


ST-052-LBR

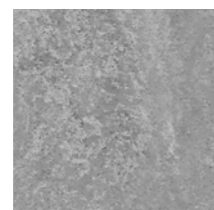


Santa Cecilia light

ST-041-BG



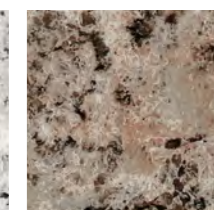
ST-052-LG



ST-052-MG



ST-041-G



ST-041-BR

Cremosa

ST-053-IV



ST-053-LG



ST-053-MG



Granite



ST-017-W

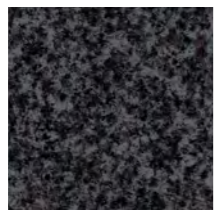
Terrazzo



ST-031-LG



ST-017-G



ST-017-BK

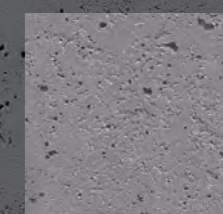


ST-031-IV



Basalt

ST-045-DG



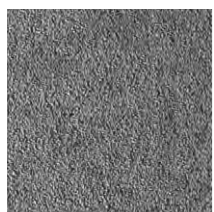
ST-045-G

Concrete

Granilite

CON-005-LG

ST-004-LG2



CON-005-MG

CON-005-DG



ST-004-LBE

ST-004-WG

Concrete

Bianco sardo

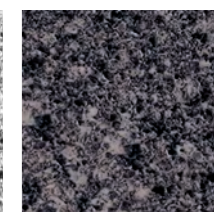
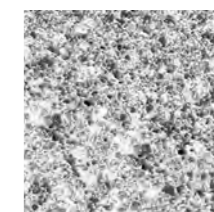
CON-003-LG

ST-006-WG



CON-003-MG

CON-003-BG



ST-006-LG

ST-006-BK

Fairfaced Concrete

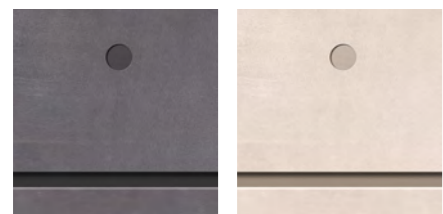
Wood Concrete



CON-012-LG

Shown at 30% of actual size

CON-013-LG



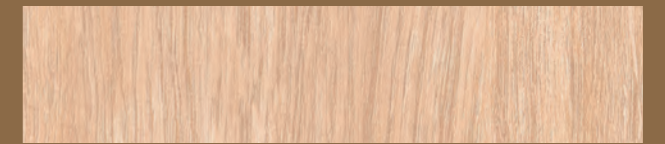
CON-012-DG

CON-012-BG



CON-013-MG

Capturing natural wood grains and subtle color contrasts to create a warm, grounded atmosphere. Our diverse range of wood designs harmonizes seamlessly with both interior spaces and consumer electronics.



Ash



Oak



Oak



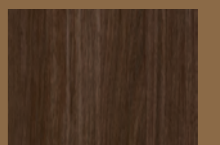
Walnut



Oak



Walnut



Dark Oak



Sycamore



Cherry



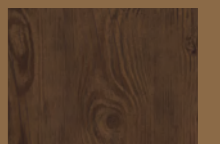
Walnut



Zebrawood



Merbau



Walnut



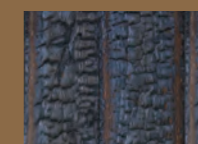
Maple



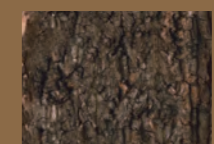
Cherry



Rosewood



Thermowood



Oak Bark

W-056-LBR

Exterior Scene



W-056-LBR



W-056-DBR



W-056-BK

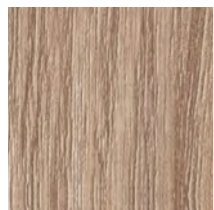
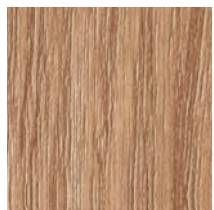


Ash

Walnut

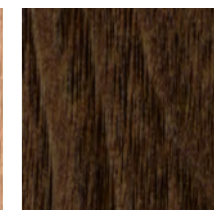
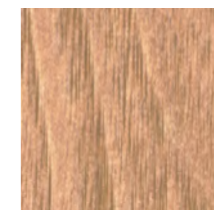
W-015-LBR

W-008-BR



W-015-BE

W-015-BG



W-008-LBR

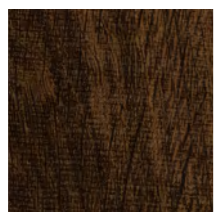
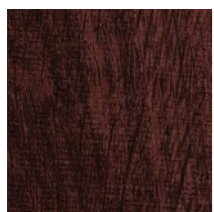
W-008-DBR

Walnut

Oak

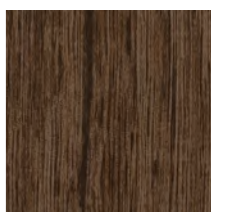
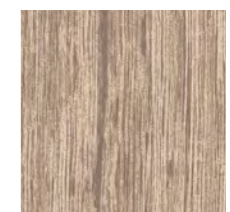
W-058-BR

W-034-BR



W-058-RBR

W-058-DBR



W-034-BG

W-034-DBR

Oak

W-004-RBR



W-004-DBR

W-004-BG

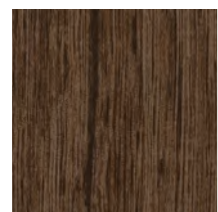
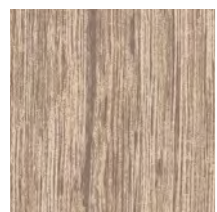


Oak

Walnut

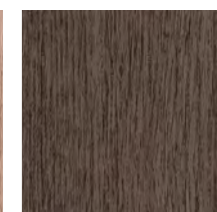
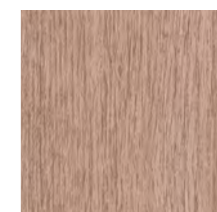
W-038-BR

W-037-DBR



W-038-BG

W-038-DBR



W-037-BE

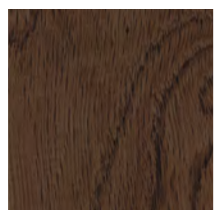
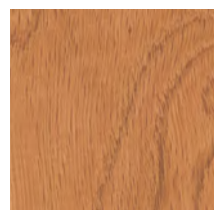
W-037-ASH

Cherry

Walnut

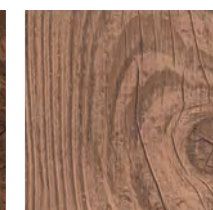
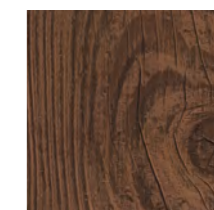
W-039-BR

W-041-DBR



W-039-LBR

W-039-DBR



W-041-BR

W-041-BG

Maple

W-046-LBR



W-046-BR

W-046-DBR

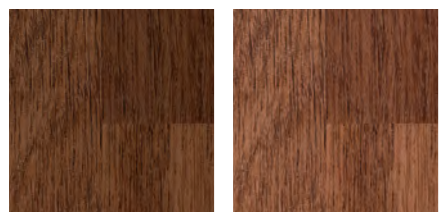


Merbau

Rosewood

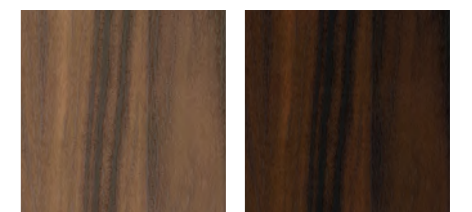
W-050-BR

W-052-RBR



W-050-DBR

W-050-RBR

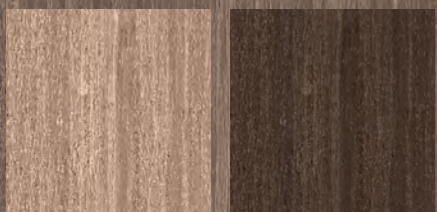


W-052-BR

W-052-DBR

Zebrawood

W-050-BR



W-053-LBR

W-053-DBR

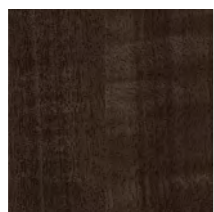
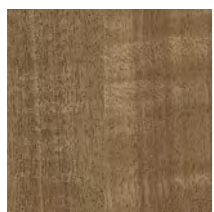


Sycamore

Cherry

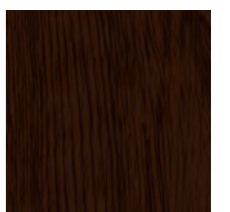
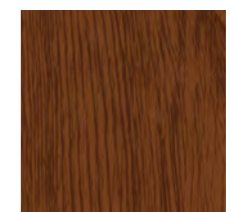
W-055-LBR

W-057-BR



W-046-BR

W-046-DBR



W-057-RBR

W-046-DBR

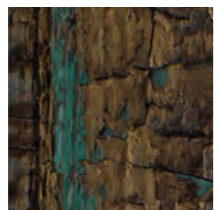
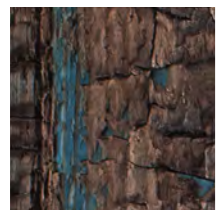
Thermowood

Oak Bark



W-051-BK

W-035-BR



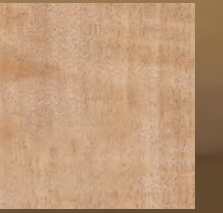
W-051-BR

W-051-YB



ST-006-BK

Interior Scene



W-055-LBR

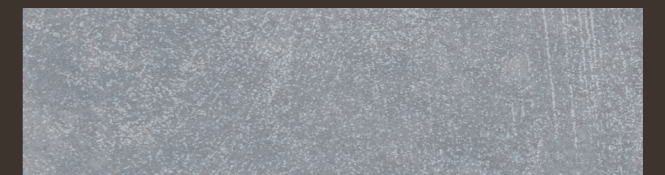


03

Corten

RST-002-DG

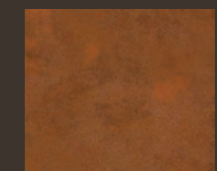
Faithfully replicating the subtle oxidized textures and rich hues shaped by the passage of time. Our rusty designs feature deep, time-worn tones that add a calm, grounding weight to any space.



Oxide Verdigris



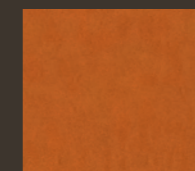
Anthracite



Corten



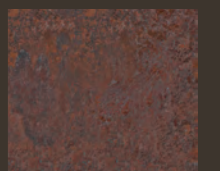
Anthracite Brown



Orange Corten



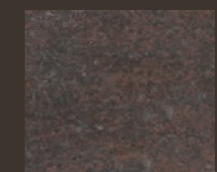
Corten Line



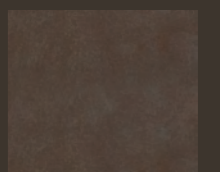
Corten



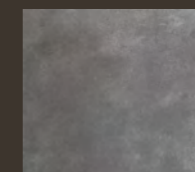
Burnished Copper



Distressed Corten



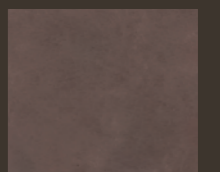
Bronze Oxide



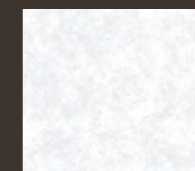
Aged Zinc



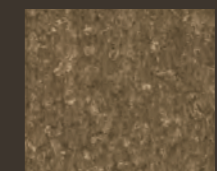
Gemmetal Corten



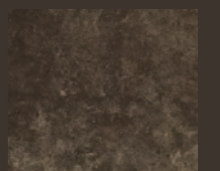
Matte Dark Sepia



White Corten

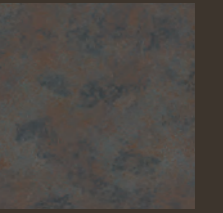


Antique Brass

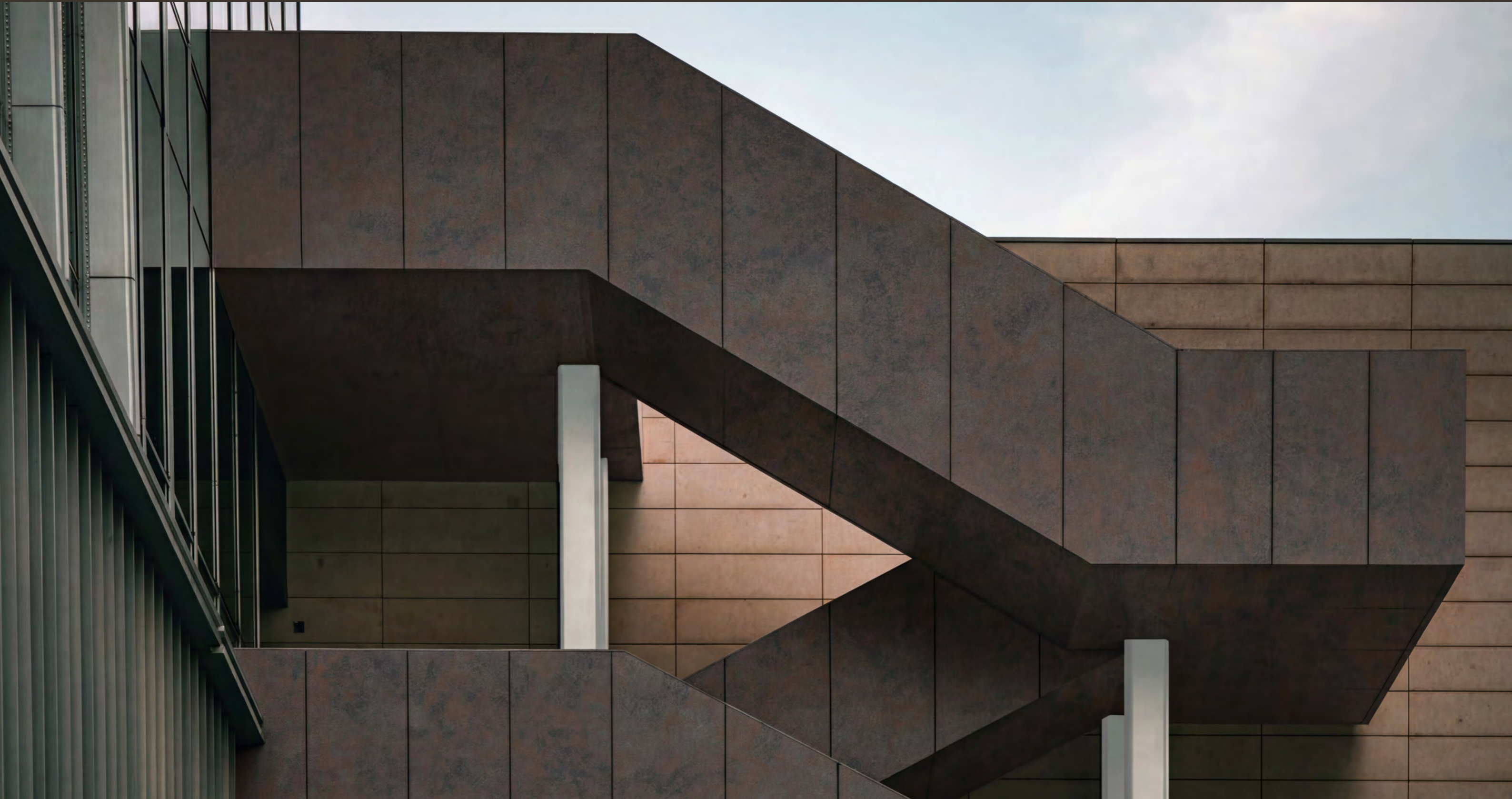


Antique Dark Brass

Exterior Scene

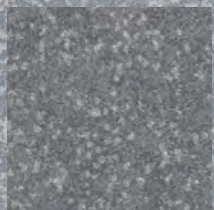


RST-002-DG



Oxide Verdigris

RST-006-LG



RST-006-MG



RST-006-DG



Corten

Anthracite

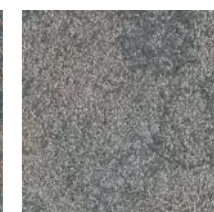
RST-001-VBR

RST-002-DG



RST-001-CBR

RST-001-MG



RST-002-LG

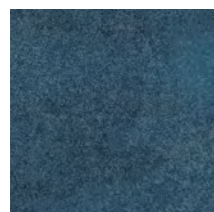
RST-002-G

Corten

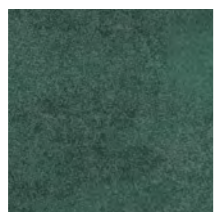
Anthracite Brown

RST-002-RD

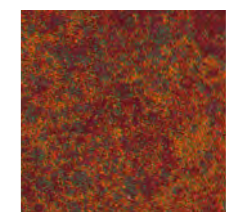
RST-002-VBR



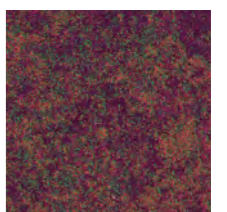
RST-002-BL



RST-002-GN

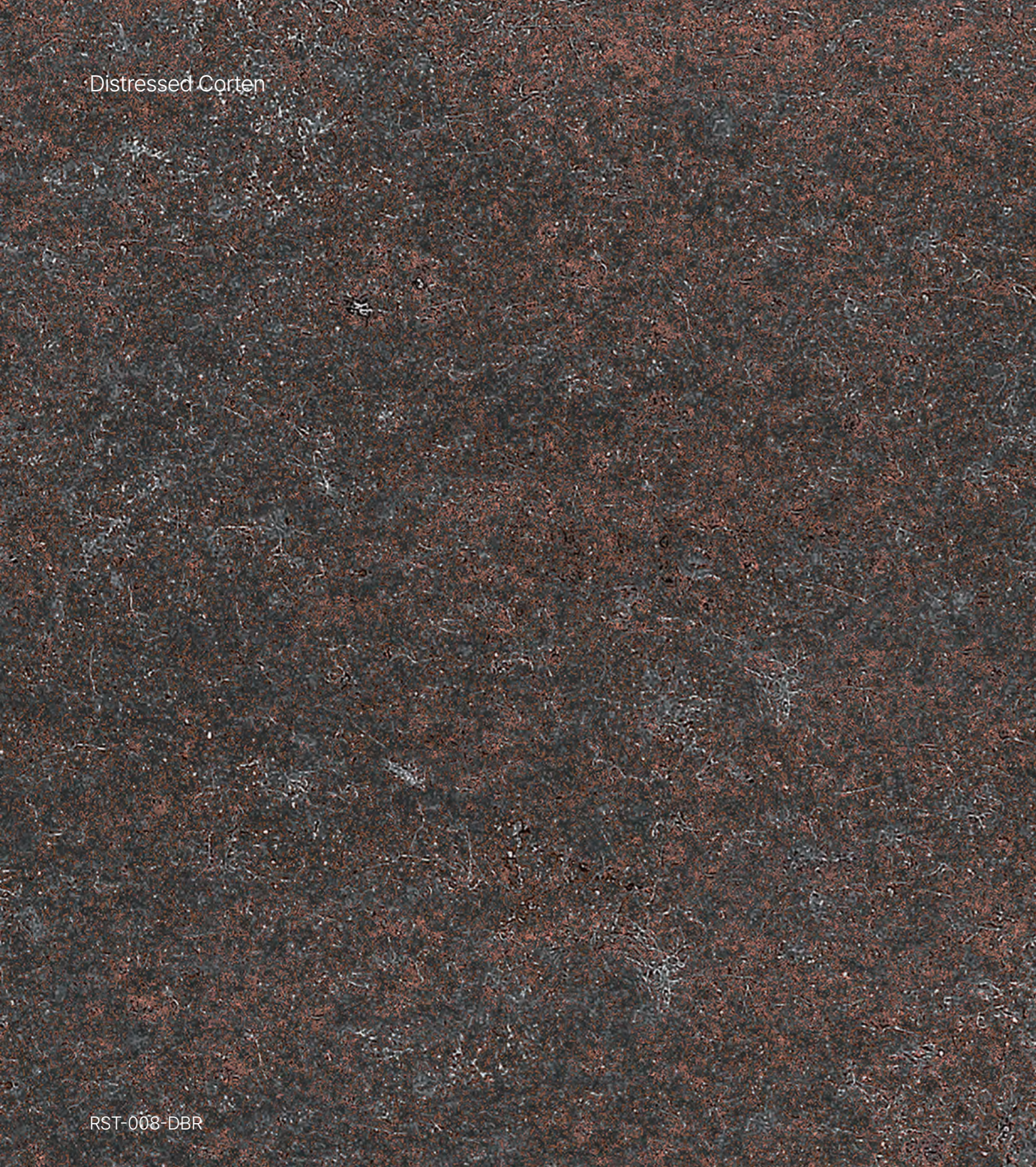


RST-002-RBR



RST-002-MG

Distressed Corten



RST-008-DBR

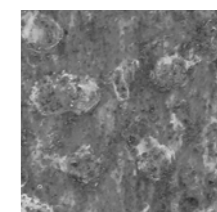


RST-008-BK

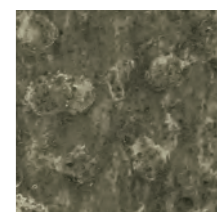
Antique Brass



RST-005-LBR



RST-005-G



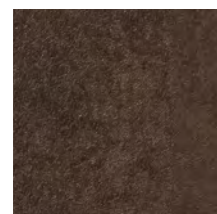
RST-005-GL

Burnished Copper

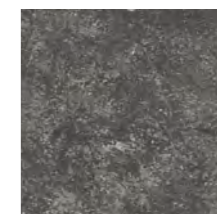
Antique Dark Brass

RST-009-BR

RST-013-DG



RST-009-DBR



RST-013-DG



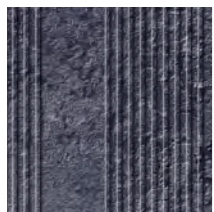
RST-013-BR

Corten Line

Bronze Oxide

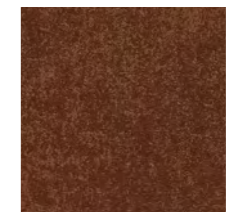
RST-003-BR

RST-007-BR



RST-003-VBL

RST-003-BK



RST-007-RBR

RST-007-GN

Matte Dark Sepia

RST-012-RBR



RST-012-BR



RST-012-GN

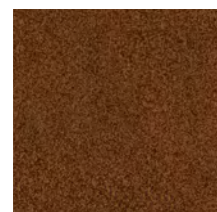


Orange Corten

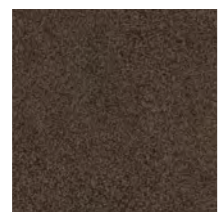
Aged Zinc

RST-031-RD

RST-010-G



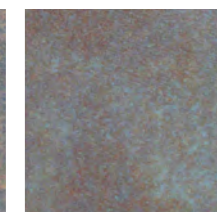
RST-031-BR



RST-031-ASH



RST-010-VBL



RST-010-VBR

White Corten

Gemmetal Corten

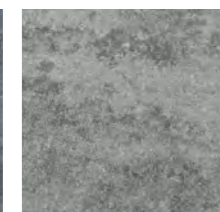
RST-035-W

RST-011-G



RST-031-G

RST-031-BR

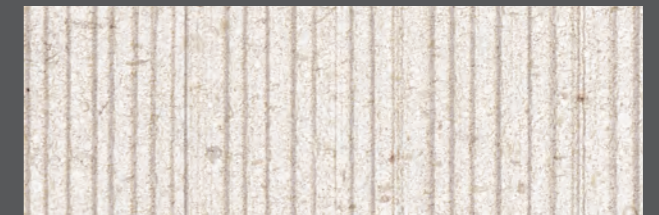


RST-011-BL

RST-011-LG

04
**GEOMETRY
FABRIC**

Intricate geometric patterns and the delicate weave of fabric converge to create a tactile, engaging surface. Our Geometric & Fabric designs offer a sophisticated rhythm and comfort to any space.



Stripe Stone



Stripe Fabric



Matrix Rusty



Tile



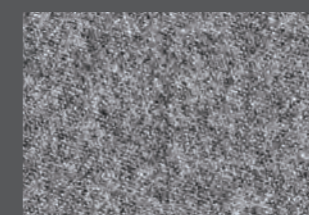
Tile



Gradation



Red Brick



Woven



Wood Louver

F-013-BG

Stripe Stone

C-039-LBR



C-039-G

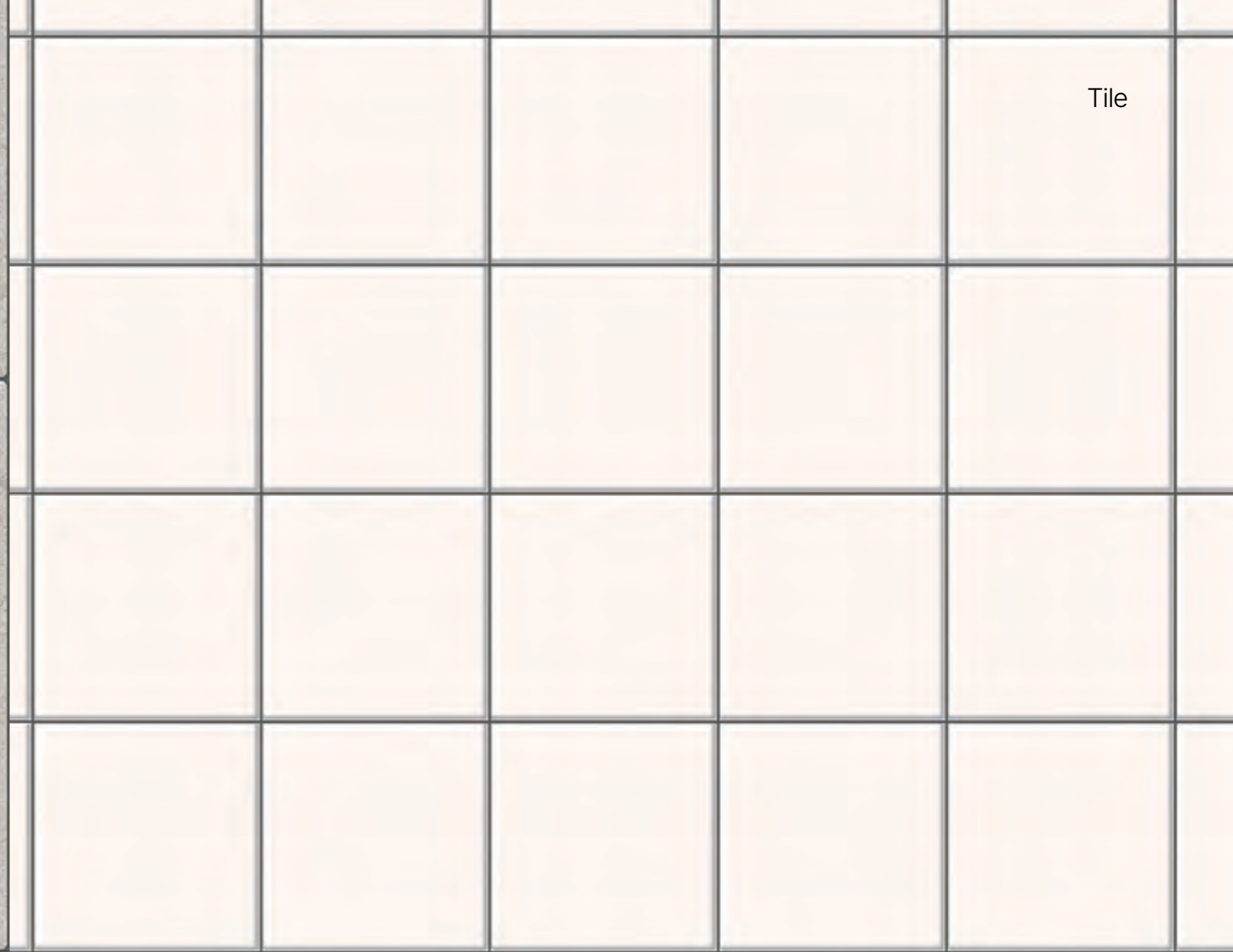
C-039-BR



Tile



Tile



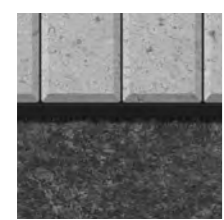
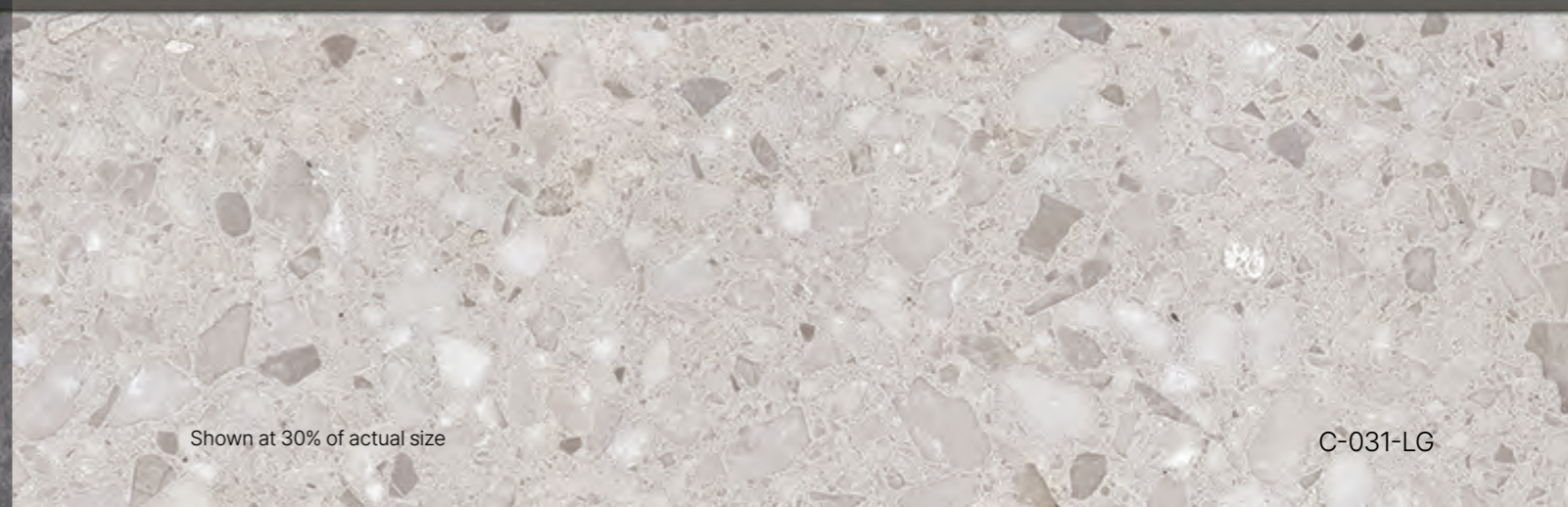
C-032-G



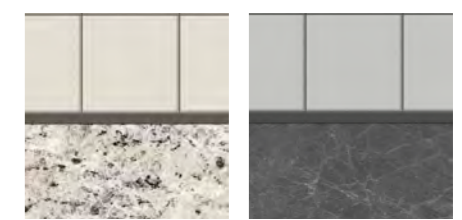
Shown at 30% of actual size

Shown at 30% of actual size

C-031-LG



C-032-BK



C-031-BE

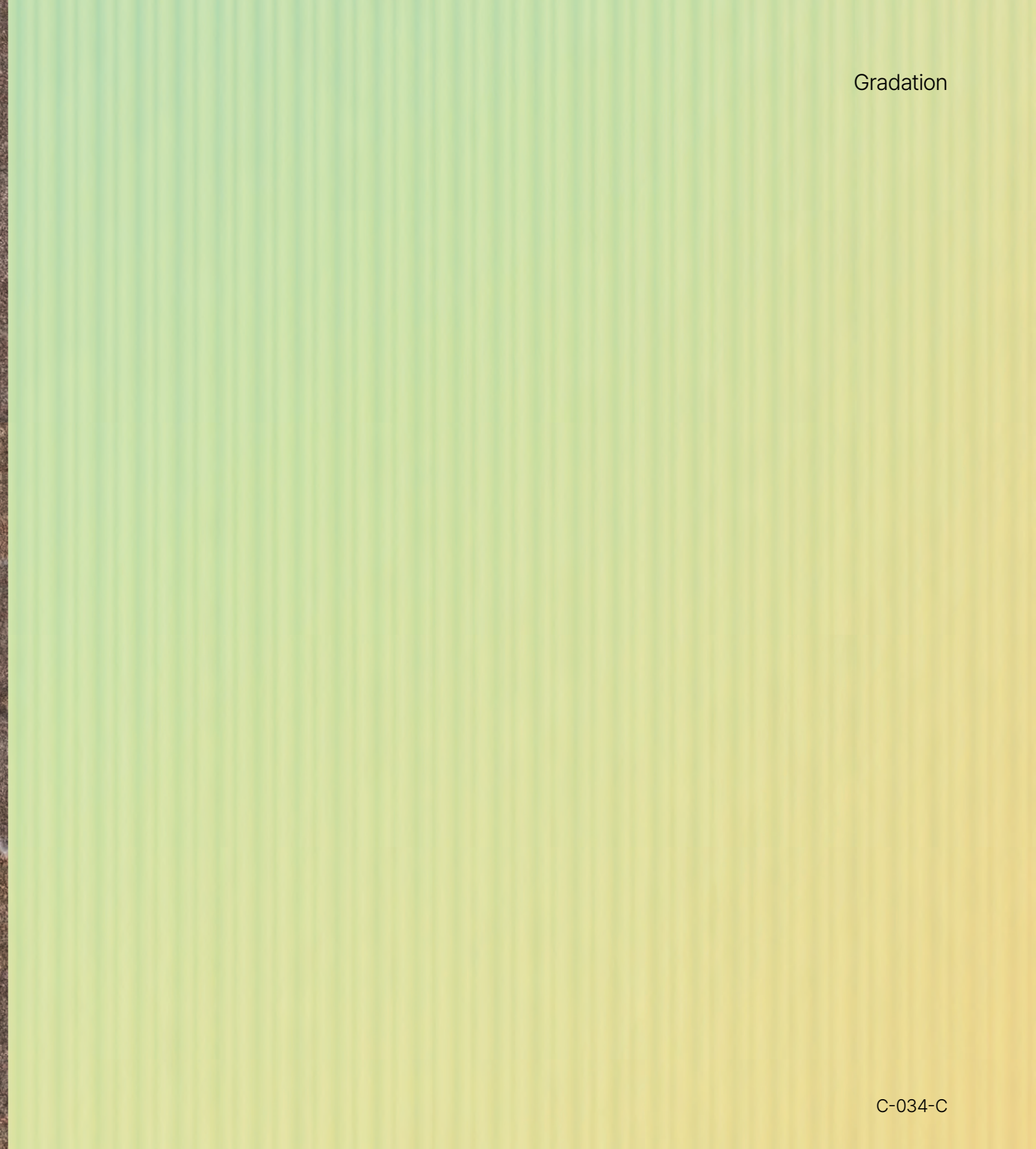
C-031-DG

Matrix Rusty

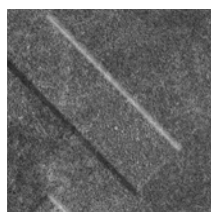


C-003-BR

Gradation



C-034-C



M-010-DG



C-034-Y



C-034-B

Red Brick



C-005-RD

Wood Louver



Shown at 30% of actual size

C-004-BR



C-005-Y

C-005-G



C-004-LBR

Exterior Scene



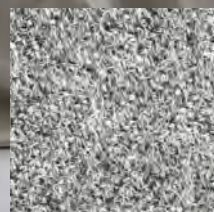
C-004-BR



Woven



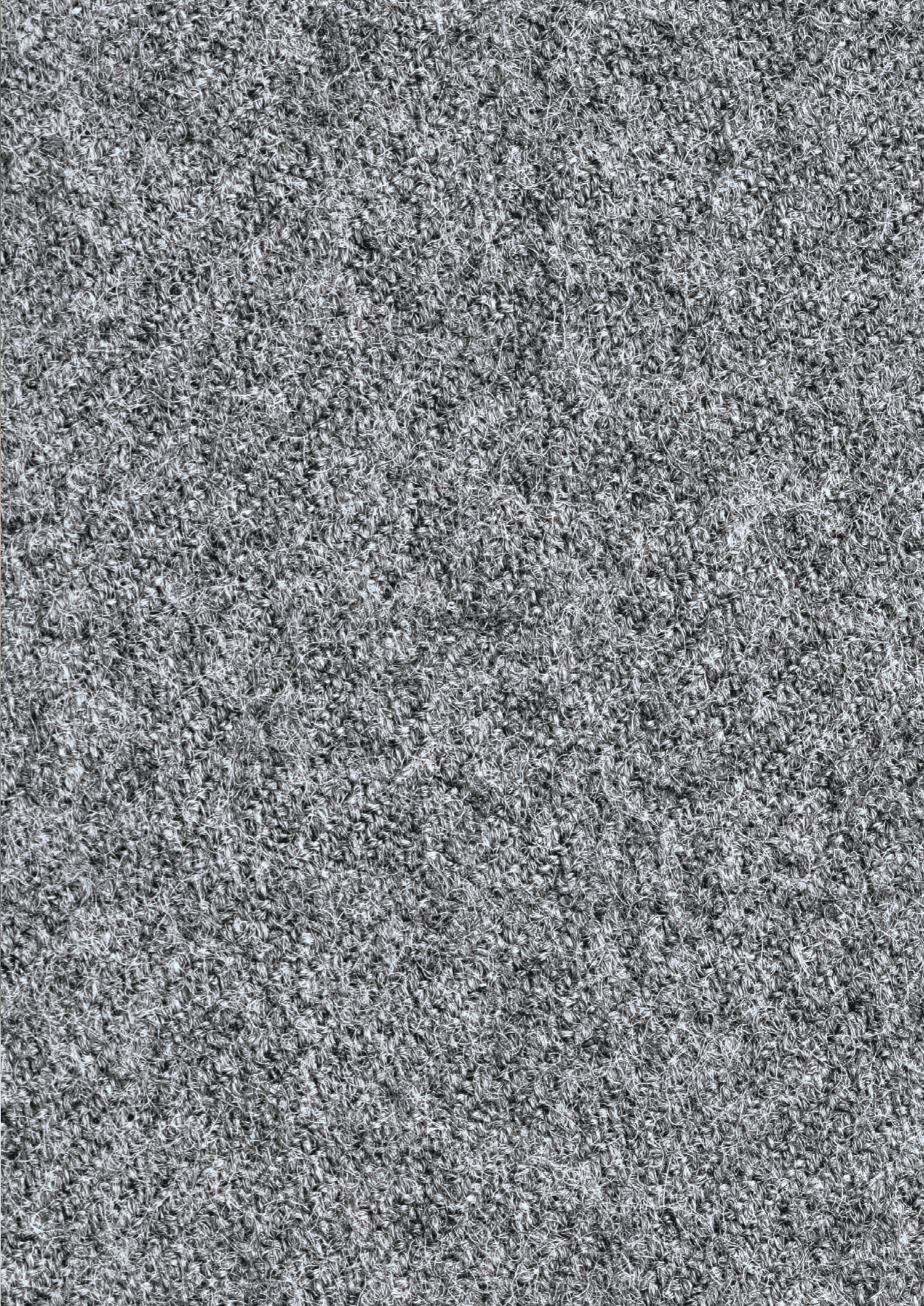
F-014-BK



F-014-G



F-014-BR



AJUSTEEL

Head Office

321, 4gongdan-ro, Gumi-si, Gyeongsangbuk-do, Korea

Design Office

Unit 605, Building B, XI Tower, 67, Seabitgongwon-ro, Gwangmyeong-si, Gyeonggi-do, Korea

Official Contact No.

+82-54-714-3000

www.ajusteel.co.kr

This catalog is for product information only, and colors may vary slightly from the actual product.